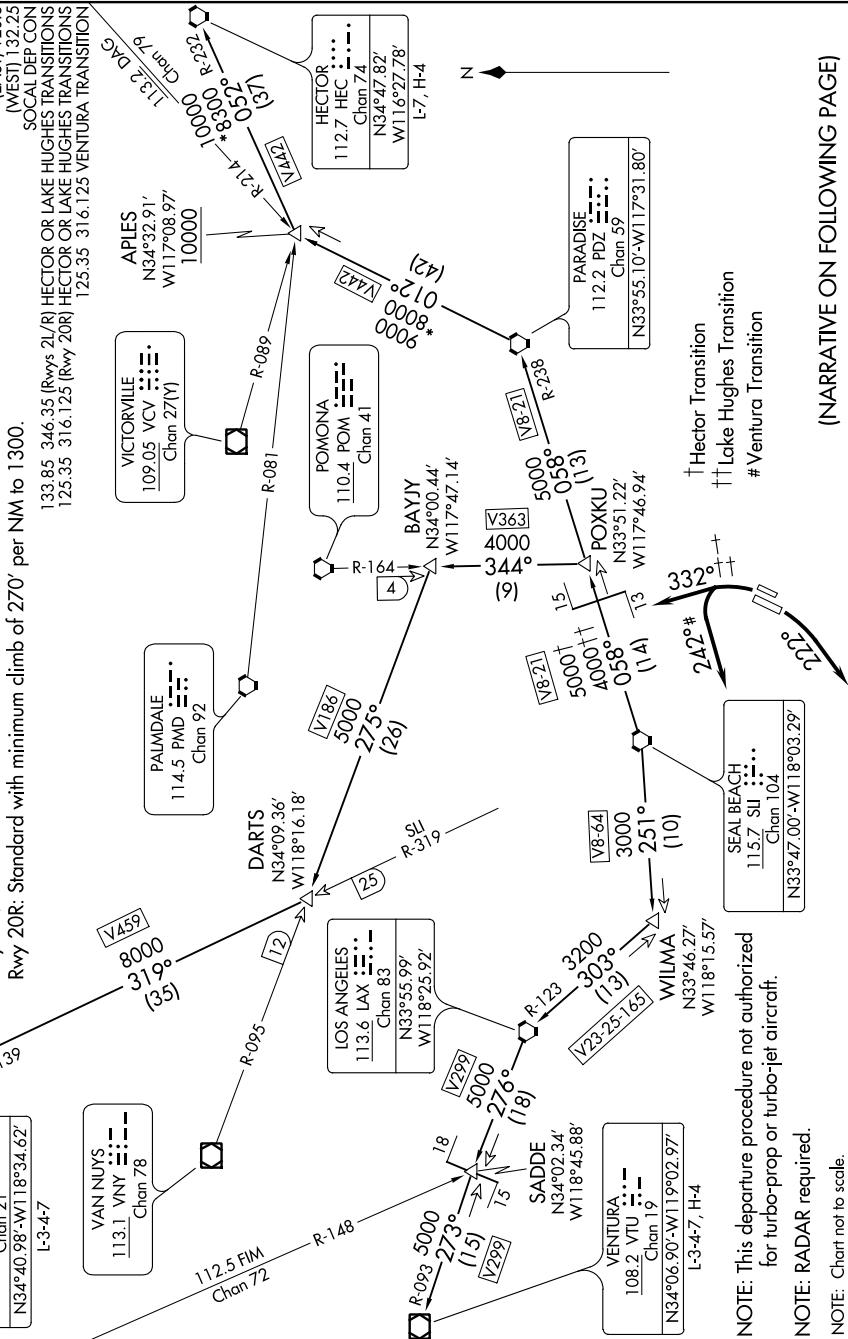


ANAHEIM ONE DEPARTURE

SW-3, 20 JUN 2019 to 18 JUL 2019

TOP ALTITUDE:
2000

TAKEOFF MINIMUMS
Rwy 20L: NA-ATC.
Rwys 2L/R: Standard.
Rwy 20R: Standard with minimum climb of 270' per NM to 1300.



(NARRATIVE ON FOLLOWING PAGE)

SW-3, 20 JUN 2019 to 18 JUL 2019

ANAHEIM ONE DEPARTURE

NOTE: This departure procedure not authorized for turbo-prop or turbo-jet aircraft.
NOTE: RADAR required.
NOTE: Chart not to scale.