

SAN DIEGO, CALIFORNIA

VOR/DME RWY 29

VORTAC PGY 109.8 Chan 35	APCH CRS 279°	Rwy ldg TDZE 26 Arpt Elev 26
----------------------------------------------	-------------------------	--------------------------------------------------

AL-374 [UN]

NORTH ISLAND NAS (HALSEY FIELD) (KNZY)

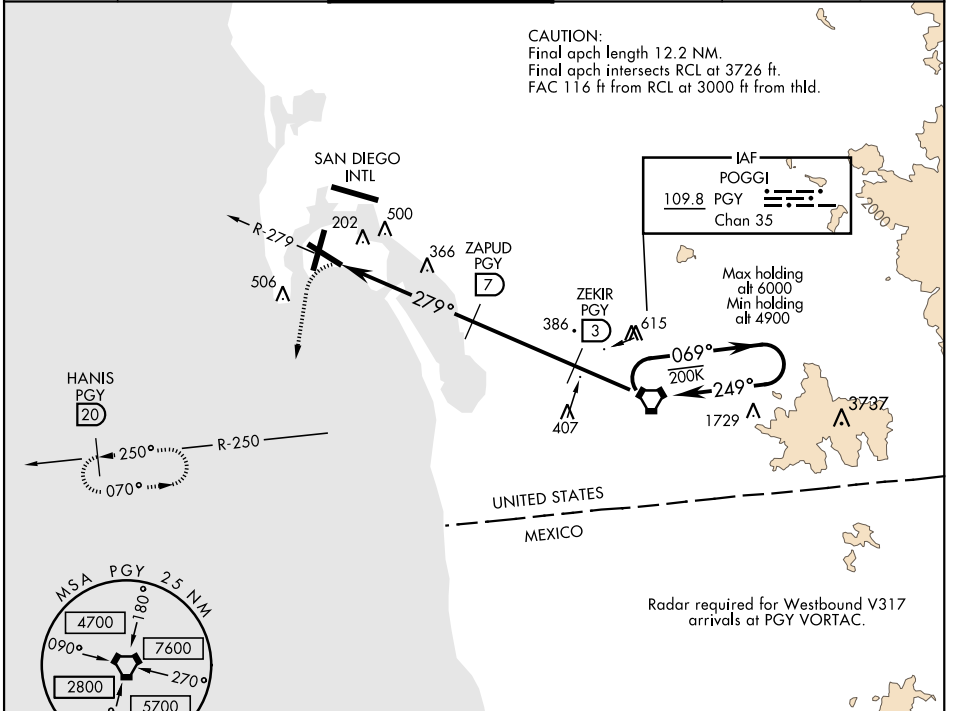
▼ * When ALS inop, increase CAT AB vis to 1 mile, CAT CD vis to 1¼ miles.
 ** Circling not authorized W of Rwy 18-36.
 Circling authorized to Rwy 18 only.



MISSED APPROACH: Climbing left turn to 2000 via hdg 177° intercept PGY VORTAC R-250 to HANIS and hold.

ATIS ★ 317.8	SOCAL APP CON 125.15 317.55	NORTH ISLAND TOWER ★ 135.1 336.4	GND CON 118.0 360.675	CLNC DEL 128.4 288.25	PAR/ASR
------------------------	---------------------------------------	--------------------------------------------	---------------------------------	---------------------------------	---------

CAUTION:
 Final apch length 12.2 NM.
 Final apch intersects RCL at 3726 ft.
 FAC 116 ft from RCL at 3000 ft from thld.



Radar required for Westbound V317 arrivals at PGY VORTAC.

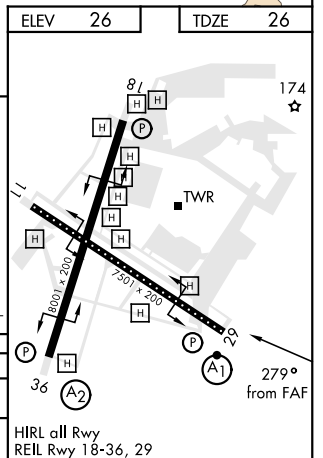
SW-3, 20 JUN 2019 to 18 JUL 2019

SW-3, 20 JUN 2019 to 18 JUL 2019

EMERG SAFE ALT 100 NM 13,600



CATEGORY	A	B	C	D
S-29 *	660-¾	634 (700-¾)	660-1⅜	634 (700-1⅜)
◻ CIRCLING **	660-1	634 (700-1)	NOT AUTHORIZED	



HIRL all Rwy
 REIL Rwy 18-36, 29

SAN DIEGO, CALIFORNIA
 Amdt 7 15SEP16

32°42'N-117°13'W

NORTH ISLAND NAS (HALSEY FIELD) (KNZY)

VOR/DME RWY 29