

RNAV (RNP) Z RWY 16L

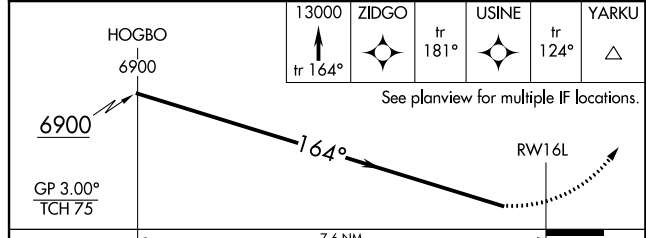
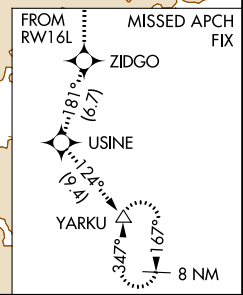
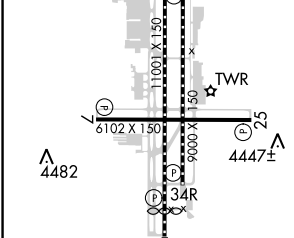
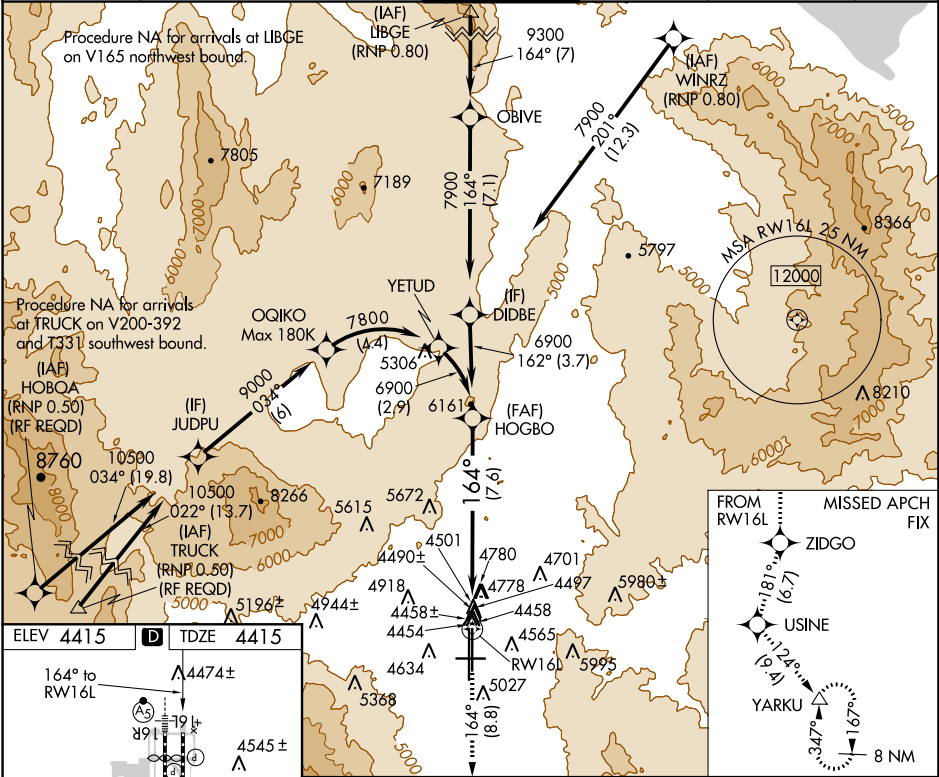
RENO/TAHOE INTL (RNO)

APP CRS	Rwy Idg	9000
164°	TDZE	4415
	Apt Elev	4415

⚠ For uncompensated Baro-VNAV systems, procedure NA below -16°C (4°F) or above 54°C (130°F). When VGSI inop, procedure NA at night. GPS required. *Missed approach requires a minimum climb of 259 feet per NM to 7000.

MISSED APPROACH: Climb to 13000 on track 164° to ZIDGO and on track 181° to USINE and on track 124° to YARKU and hold, continue climb-in-hold to 13000.

D-ATIS	NORCAL APP CON	RENO TOWER	GND CON	CLNC DEL	CPDLC
135.8 363.0	119.2 279.55 126.3 353.9	118.7 257.8	121.9 348.6	124.9 370.85	



CATEGORY	A	B	C	D
RNP 0.12 DA*	4796-1 1/8	381 (400-1 1/8)		NA
RNP 0.30 DA	5133-2 1/2	718 (800-2 1/2)		NA

MIRL Rwy 7-25
REIL Rws 7, 16L, 25, and 34R
HIRL Rws 16R-34L and 16L-34R

AUTHORIZATION REQUIRED

SW-4, 20 JUN 2019 to 18 JUL 2019

SW-4, 20 JUN 2019 to 18 JUL 2019