

RNAV (RNP) Y RWY 16L

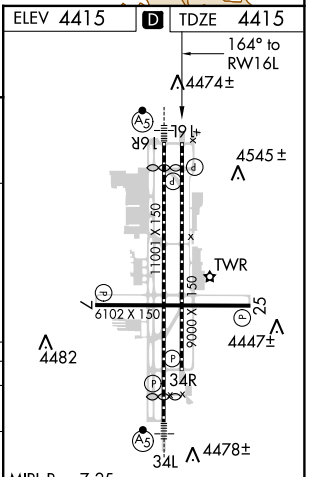
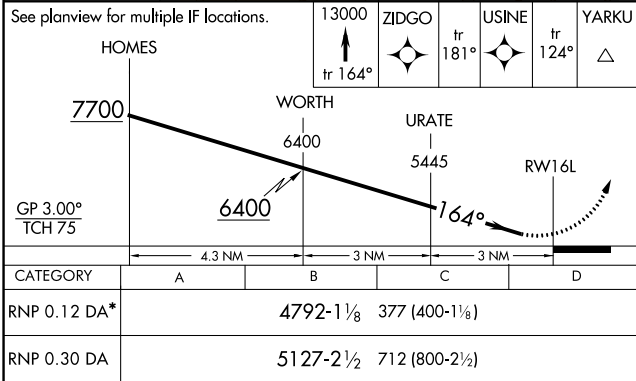
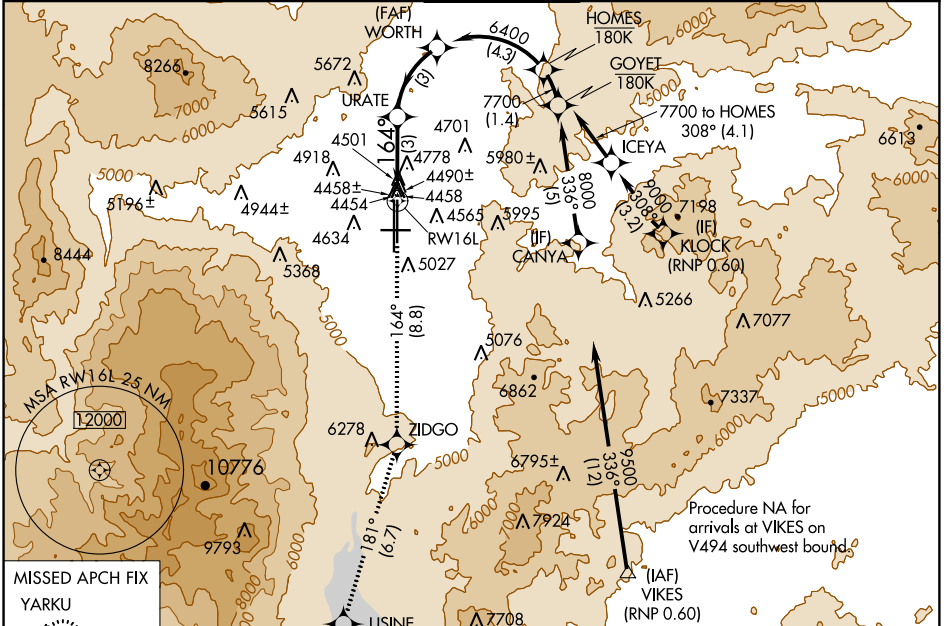
RENO/TAHOE INTL (RNO)

APP CRS	Rwy Idg	9000
164°	TDZE	4415
	Apt Elev	4415

For uncompensated Baro-VNAV systems, procedure NA below -14°C (7°F) or above 44°C (111°F). Procedure NA at night.
 RF Required. GPS Required. *Missed approach requires a minimum climb of 252 feet per NM to 7200.

MISSED APPROACH: Climb to 13000 on track 164° to ZIDGO and on track 181° to USINE and on track 124° to YARKU and hold, continue climb-in-hold to 13000.

D-ATIS	NORCAL APP CON	RENO TOWER	GND CON	CLNC DEL	CPDLC
135.8 363.0	119.2 279.55 126.3 353.9	118.7 257.8	121.9 348.6	124.9 370.85	



AUTHORIZATION REQUIRED

MIRL Rwy 7-25
 REIL Rwys 7, 16L, 25, and 34R
 HIRL Rwys 16R-34L and 16L-34R

SW-4, 20 JUN 2019 to 18 JUL 2019

SW-4, 20 JUN 2019 to 18 JUL 2019