

# LOC Y RWY 16R

RENO/TAHOE INTL(RNO)

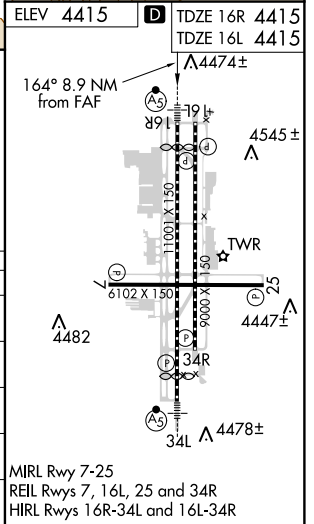
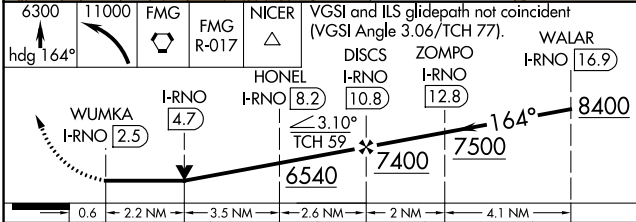
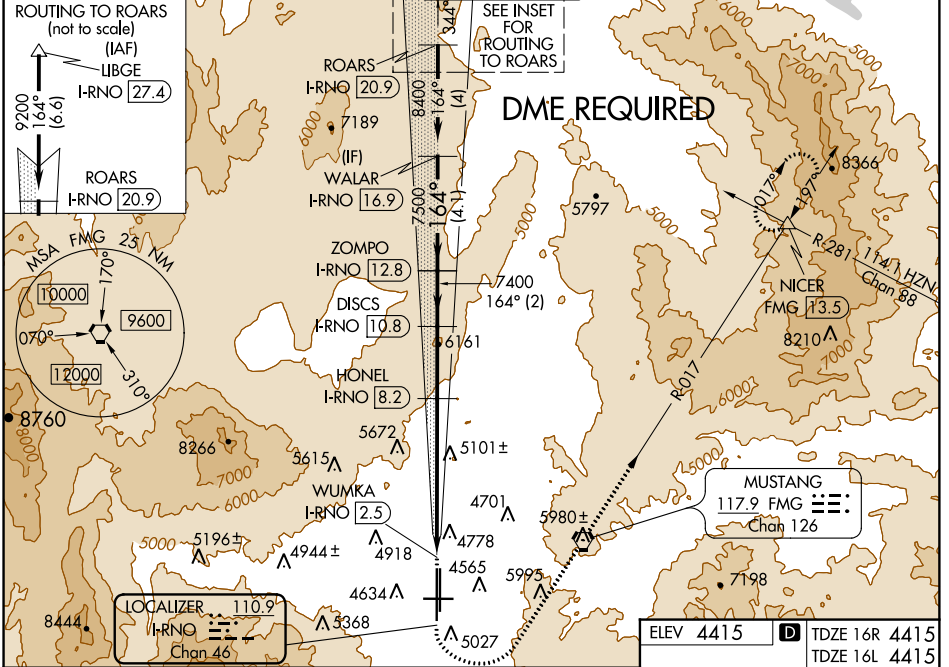
LOC/DME I-RNO <b>110.9</b> Chan 46	APP CRS <b>164°</b>	Rwy Idg TDZE Apt Elev	16R <b>10001 4415 4415</b>	16L <b>9000 4415 4415</b>
--	------------------------	-----------------------------	-------------------------------	------------------------------

**▼** Circling NA for Cat E southwest of Rwy 7 and 34L. Circling Rwy 7 NA at night. For inop MALSR, increase S-LOC 16R\* Cat E visibility to 3 miles.  
# Inop table does not apply to Cats C, D, E.

**▲** MALSR 16R

**MISSED APPROACH:** Climb to 6300 on heading 164° then climbing left turn 11000 direct FMG VORTAC and on FMG VORTAC R-017 to NICER INT and hold, continue climb-in-hold to 11000.  
\*Missed approach requires a minimum climb of 320 feet per NM to 8000.  
†Missed approach requires a minimum climb of 260 feet per NM to 8000.

D-ATIS <b>135.8 363.0</b>	NORCAL APP CON <b>119.2 279.55 126.3 353.9</b>	RENO TOWER <b>118.7 257.8</b>	GND CON <b>121.9 348.6</b>	CLNC DEL <b>124.9 370.85</b>	CPDLC
------------------------------	---	----------------------------------	-------------------------------	---------------------------------	-------



CATEGORY	A	B	C	D	E
S-LOC 16R *	5420/40 1005 (1100-3/4)	5420/55 1005 (1100-1)	5420-2½	1005 (1100-2½)	
S-LOC 16R †#	5720/40 1305 (1400-3/4)	5720/55 1305 (1400-1)	5720-3	1305 (1400-3)	
S-LOC 16R #	5920/40 1505 (1600-3/4)	5920/55 1505 (1600-1)	5920-3	1505 (1600-3)	6180-3 1765 (1800-3)
SIDESTEP 16L * #	5420-1¼ 1005 (1100-1¼)	5420-1½ 1005 (1100-1½)	5420-3	1005 (1100-3)	
CIRCLING	5920-1¼ 1505 (1600-1¼)	5920-1½ 1505 (1600-1½)	6480-3	2065 (2100-3)	6700-3 2285 (2300-3)

MIRL Rwy 7-25  
REL Rwys 7, 16L, 25 and 34R  
HIRL Rwys 16R-34L and 16L-34R

SW-4, 20 JUN 2019 to 18 JUL 2019

SW-4, 20 JUN 2019 to 18 JUL 2019