


LOC/DME I-RNO 110.9 Chan 46	APP CRS 164°	Rwy Idg 10011 TDZE 4415 Apt Elev 4415
---	------------------------	--

ILS Z or LOC Z RWY 16R

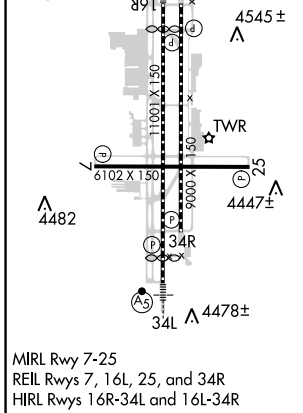
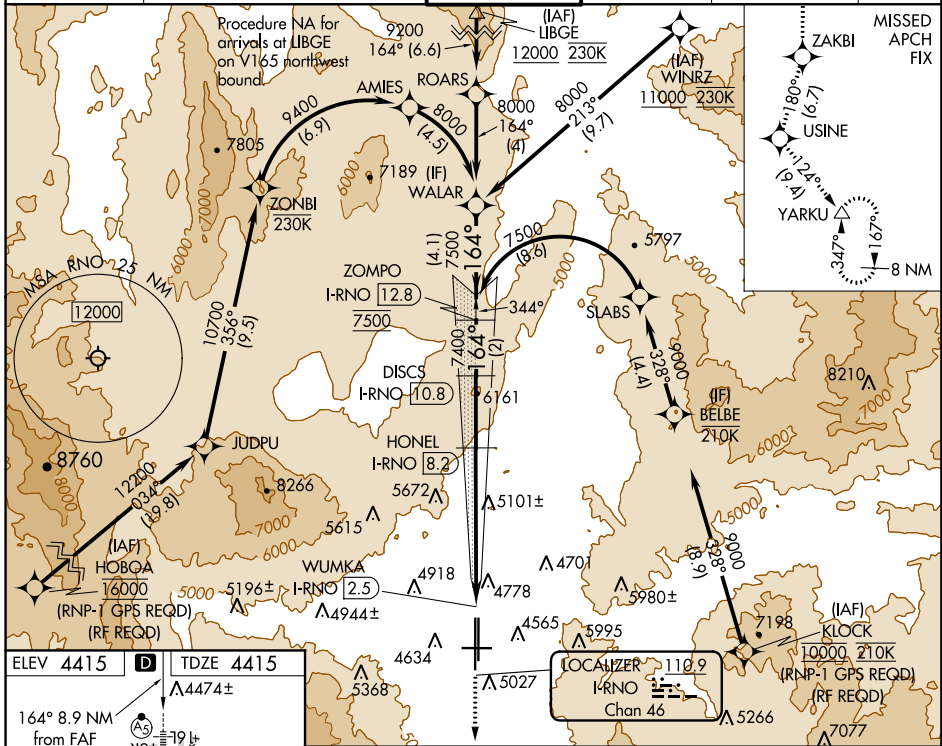
RENO/TAHOE INTL (RNO)

⚠ Circling Rwy 7 NA at night. DME/DME RNP-0.3 NA. DME required. RNAV 1-GPS required.
⚠ -15°C # For inop MALS/R, increase S-ILS 16R all Cats visibility to 2 1/2 mile.
 † RVR 1800 authorized with use of FD or AP or HUD to DA.

MALS/R


MISSED APPROACH: Climb to 13000 on the RNAV missed approach route to YARKU and hold, continue climb-in-hold to 13000.
 † Missed approach requires a minimum climb of 390 feet per NM to 8000.

D-ATIS 135.8 363.0	NORCAL APP CON 119.2 279.55 126.3 353.9	RENO TOWER 118.7 257.8	GND CON 121.9 348.6	CLNC DEL 124.9 370.85	CPDLC
------------------------------	---	----------------------------------	-------------------------------	---------------------------------	-------



ELEV 4415	TDZE 4415	LOCIZER I-RNO 118.9 Chan 46
13000 ZAKBI	USINE	YARKU
↑	tr 180°	tr 124°
See planview for multiple IF locations.		
WUMKA I-RNO 2.5	HONEL I-RNO 8.2	DISCS I-RNO 10.8
ZOMPO I-RNO 12.8	WALAR	
*LOC only.		
0.6	2.2 NM	3.5 NM
GS 3.10° TCH 59		

CATEGORY	A	B	C	D
S-ILS 16R †		4615/24	200 (200-1/2)	
S-ILS 16R #		5138-1 7/8	723 (800-1 7/8)	
S-LOC 16R	5420/40 1005 (1100-3/4)	5420/55 1005 (1100-1)	5420-2 1/2	1005 (1100-2 1/2)
C CIRCLING	5420-1 1/4 1005 (1100-1 1/4)	5420-1 1/2 1005 (1100-1 1/2)	6480-3	2065 (2100-3)

SW-4, 20 JUN 2019 to 18 JUL 2019

SW-4, 20 JUN 2019 to 18 JUL 2019