


LOC/DME I-RNO <b>110.9</b> Chan <b>46</b>	APP CRS <b>164°</b>	Rwy Idg TDZE Apt Elev <b>10001</b> <b>4415</b> <b>4415</b>
---	------------------------	---

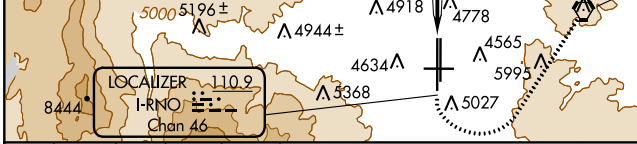
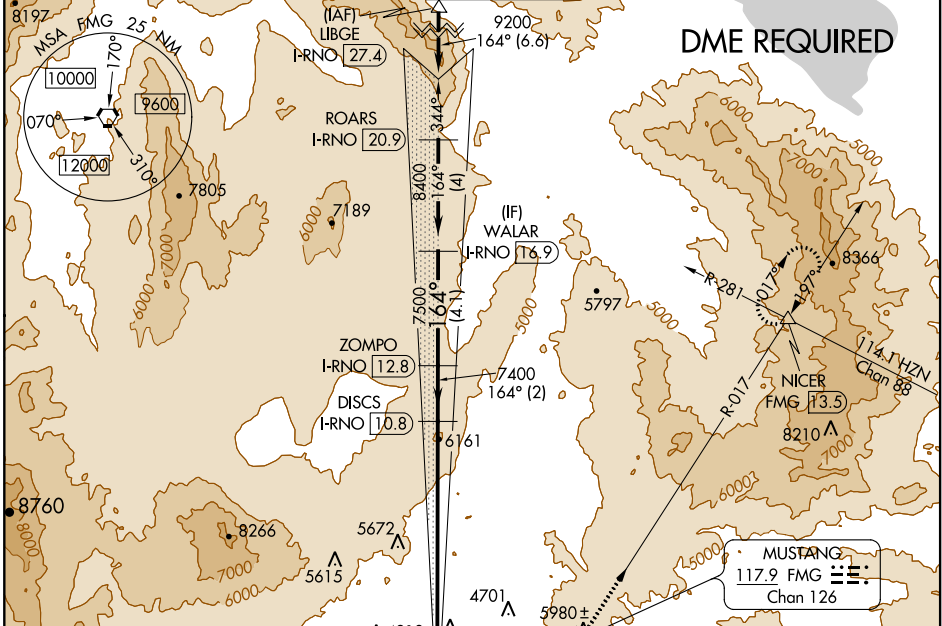
# ILS Y RWY 16R





RENO/TAHOE INTL (RNO)

# Inop table does not apply.  
† For inop MALS/R, increase  
-15°C S-ILS R16R all Cats  
visibility to 1 1/8 mile.

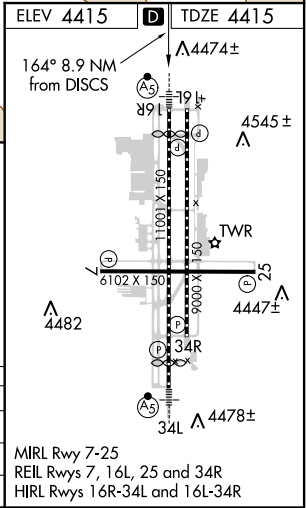
**MALS/R**   
**MISSED APPROACH:** Climb to 6300 then climbing left turn to 11000 direct FMG VORTAC and on FMG VORTAC R-017 to NICER INT/FMG 13.5 DME and fld.  
 \* Missed approach requires a minimum climb of 350 feet per NM to 8000.  
 \*\* Missed approach requires a minimum climb of 275 feet per NM to 8000.

D-ATIS <b>135.8 363.0</b>	NORCAL APP CON <b>119.2 279.55 126.3 353.9</b>	RENO TOWER <b>118.7 257.8</b>	GND CON <b>121.9 348.6</b>	CLNC DEL <b>124.9 370.85</b>	CPDLC
------------------------------	---	----------------------------------	-------------------------------	---------------------------------	-------



6300	11000	FMG	NICER			
						
		FMG R-017		DISCS I-RNO 10.8	ZOMPO I-RNO 12.8	WALAR I-RNO 16.9

VGSI and descent angles not coincident (VGSI Angle 3.06/TCH 77).



CATEGORY	A	B	C	D	E
S-ILS 16R *†		4915/60	500 (500-1 1/4)		
S-ILS 16R **‡		5415-4	1000 (1000-4)		
S-ILS 16R #		5915-6	1500 (1500-6)		

MIRL Rwy 7-25  
 REIL Rwys 7, 16L, 25 and 34R  
 HIRL Rwys 16R-34L and 16L-34R

SW-4, 20 JUN 2019 to 18 JUL 2019

SW-4, 20 JUN 2019 to 18 JUL 2019