

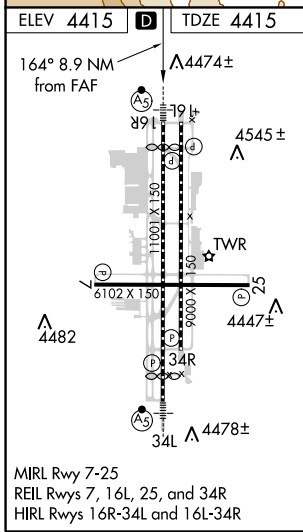
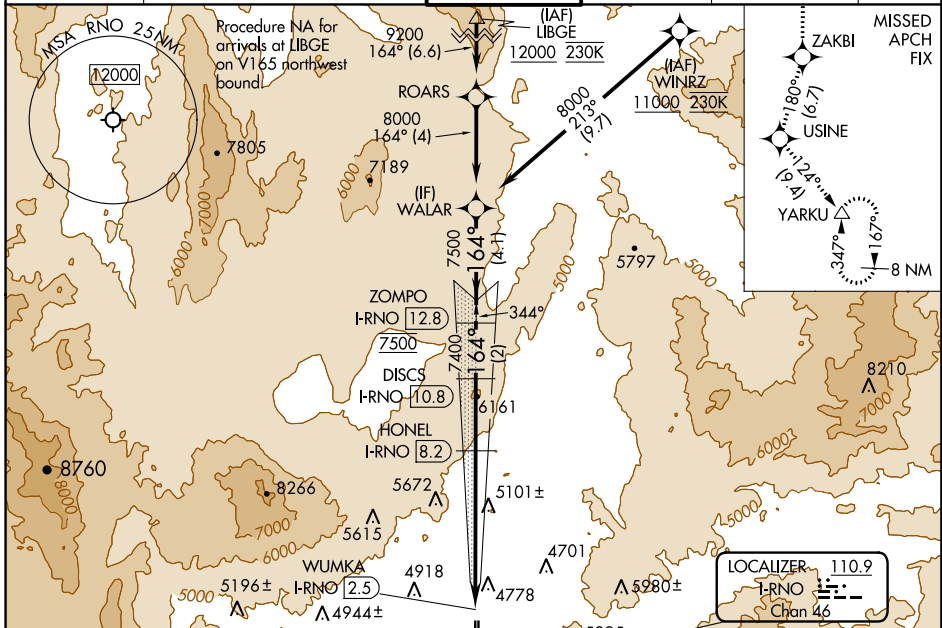
LOC/DME I-RNO 110.9 Chan 46	APP CRS 164°	Rwy Idg 10011 TDZE 4415 Apt Elev 4415
---	------------------------	--

ILS X or LOC X RWY 16R

RENO/TAHOE INTL (RNO)

<p>⚠ DME/DME RNP-0.3 NA. RNAV 1-GPS required. DME required. Circling Rwy 7 NA at night.</p> <p>⚠ -15°C # For inop MALSRL, increase S-ILS 16R all Cats visibility to 2½ mile.</p> <p>† RVR 1800 authorized with use of FD or AP or HUD to DA.</p>	<p>MALSRL</p>	<p>MISSED APPROACH: Climb to 13000 on the RNAV missed approach route to YARKU and hold, continue climb-in-hold to 13000.</p> <p>† Missed approach requires minimum climb of 390 feet per NM to 8000.</p>
--	---------------	--

D-ATIS 135.8 363.0	NORCAL APP CON 119.2 279.55	RENO TOWER 118.7 257.8	GND CON 121.9 348.6	CLNC DEL 124.9 370.85	CPDLC
------------------------------	---------------------------------------	----------------------------------	-------------------------------	---------------------------------	-------



ELEV 4415	TDZE 4415		
13000 ZAKBI	USINE tr 180°	YARKU tr 124°	WALAR
* LOC only.			
WUMKA I-RNO [2.5]	HONEL I-RNO [8.2]	DISCS I-RNO [10.8]	ZOMPO I-RNO [12.8]
<p>7400 6540* 7400 7500 8000</p> <p>0.6 2.2 NM 3.5 NM 2.6 NM 2 NM 4.1 NM</p>			
<p>VGSI and ILS glidepath not coincident (VGSI Angle 3.06/TCH 77).</p> <p>GS 3.10° TCH 59</p>			

CATEGORY	A	B	C	D
S-ILS 16R†		4615/24	200 (200-½)	
S-ILS 16R#		5138-1⅞	723 (800-1⅞)	
S-LOC 16R	5420/40 1005 (1100-¾)	5420/55 1005 (1100-1)	5420-2½	1005 (1100-2½)
C CIRCLING	5420-1¼ 1005 (1100-1¼)	5420-1½ 1005 (1100-1½)	6480-3	2065 (2100-3)

SW-4, 20 JUN 2019 to 18 JUL 2019

SW-4, 20 JUN 2019 to 18 JUL 2019