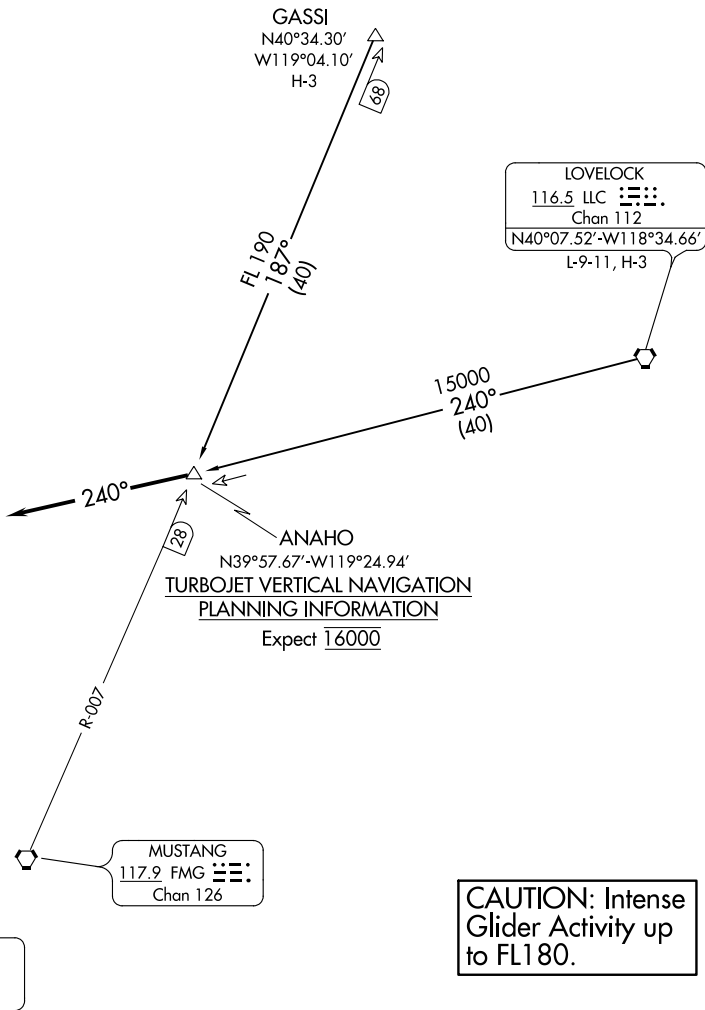


(ANAHO.ANAHO2) 17173
ANAHO TWO ARRIVAL

AL-346 (FAA)

RENO/TAHOE INTL (RNO)
 RENO, NEVADA

NORCAL APP CON
 RWY 16L/R 126.3 353.9
 RWY 34L/R 119.2 279.55
 D-ATIS 135.8 363.0



ANAHO
 N39°57.67'-W119°24.94'
TURBOJET VERTICAL NAVIGATION
PLANNING INFORMATION
 Expect 16000

LOVELOCK
 116.5 LLC
 Chan 112
 N40°07.52'-W118°34.66'
 L-9-11, H-3

MUSTANG
 117.9 FMG
 Chan 126

LOCALIZER 110.9
 I-RNO
 Chan 46

**CAUTION: Intense
 Glider Activity up
 to FL180.**

NOTE: RADAR required.
 NOTE: Chart not to scale.

ARRIVAL ROUTE DESCRIPTION

GASSI TRANSITION (GASSI.ANAHO2): From over GASSI via FMG R-007 to ANAHO INT/DME. Thence....

LOVELOCK TRANSITION (LLC.ANAHO2): From over LLC VORTAC via LLC R-240 to ANAHO INT/DME. Thence....

....Depart ANAHO INT/DME heading 240° for vectors to final approach course.