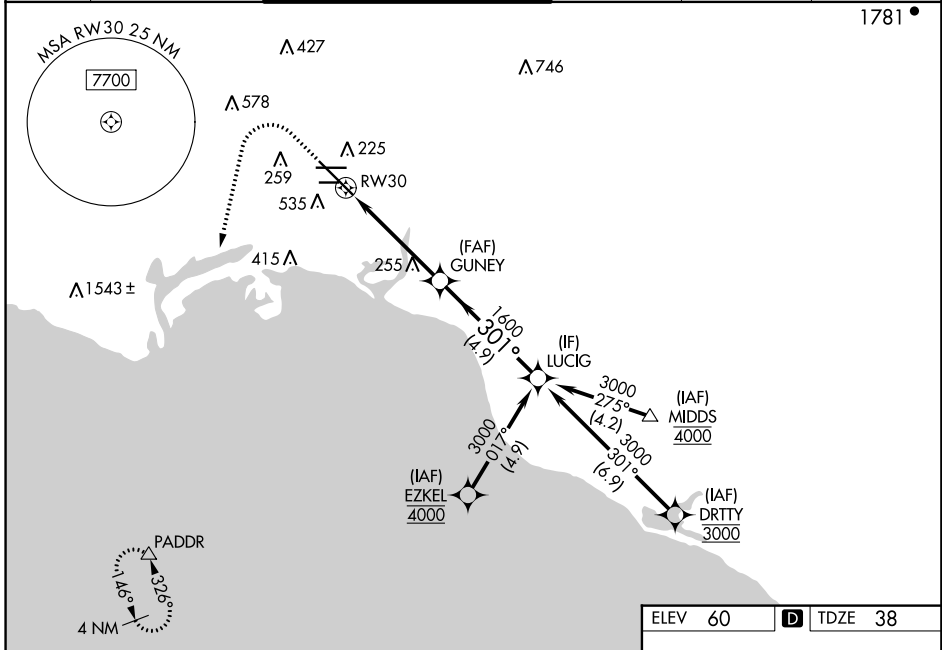


| | | | |
|--|------------------------|-----------------------------|---------------------------------------|
| WAAS CH 99521 W30A | APP CRS 301° | Rwy Idg TDZE Apt Elev | 7415 38 60 |
|--|------------------------|-----------------------------|---------------------------------------|

RNAV (GPS) Z RWY 30

LONG BEACH/DAUGHERTY FIELD (LGB)

| | | | | | | |
|--|--|---|--|---|---------------------------|-------------------------|
| RNP APCH. | | LONG BEACH TOWER* 120.5 257.6 (Rwy 12) 119.4 (CTAF) 0 257.6 (Rwy 30) | | GND CON 133.0 257.6 | CLNC DEL 118.15 | UNICOM 122.95 |
| <p>⚠ For uncompensated Baro-VNAV systems, LNAV/VNAV NA below 4°C or above 54°C. For inop ALS, increase LNAV Cat C and D visibility to 1½ SM.</p> | | MALSR | | MISSED APPROACH: Climb to 800 then climbing left turn to 3000 direct PADDR and hold | | |
| ATIS 127.75 | SOCAL APP CON 125.35 316.125 | | | | | 1781 • |



SW-3, 20 JUN 2019 to 18 JUL 2019

SW-3, 20 JUN 2019 to 18 JUL 2019

| | | | | |
|--|--------------------|-------------|--|--------------|
| ELEV 60 | D TDZE 38 | | | |
| 800 | 3000 | PADDR | VGSI and RNAV glidepath not coincident (VGSI Angle 3.00/TCH 73). | |
| *LNAV only | LUCIG | | | |
| <p>GUNNEY 1600 301° 3000</p> <p>RWY 30 2.2 NM 2.5 NM 4.9 NM</p> <p>GP 3.00° TCH 58</p> | | | | |
| CATEGORY | A | B | C | D |
| LPV DA | 261/18 223 (300-½) | | | |
| LNAV/VNAV DA | 568/55 530 (600-1) | | | |
| LNAV MDA | 520/24 | 482 (500-½) | 520/50 | 482 (500-1) |
| C CIRCLING | 840-1 | 780 (800-1) | 840-1½ | 780 (800-1½) |

