

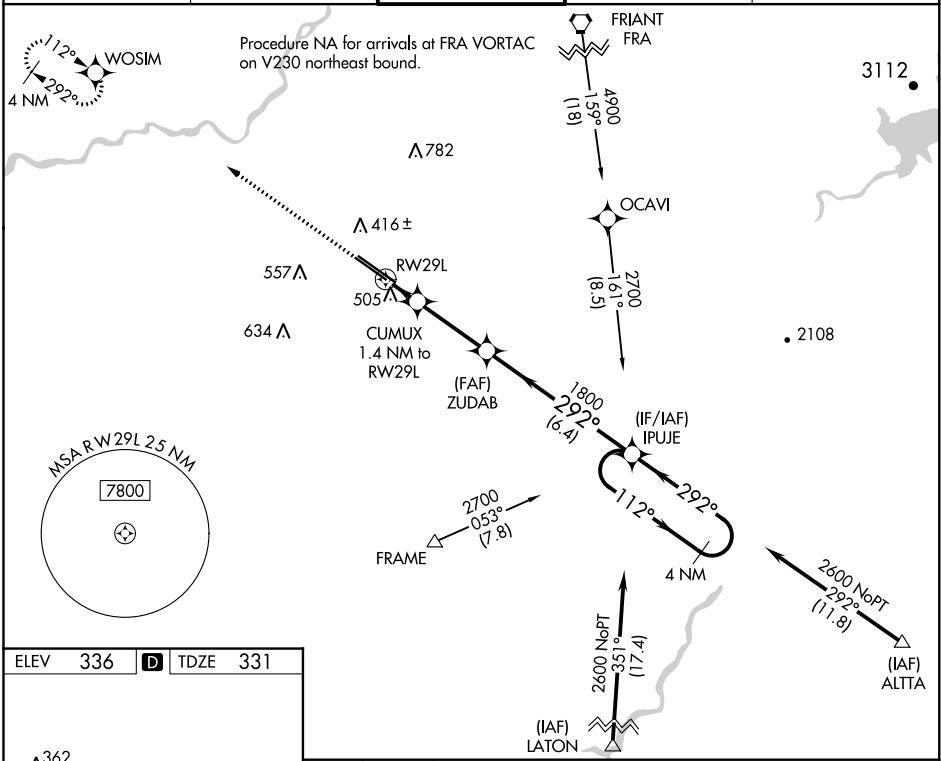
WAAS CH <b>50530</b> <b>W29B</b>	APP CRS <b>292°</b>	Rwy Idg TDZE Apt Elev	<b>8008</b> <b>331</b> <b>336</b>
--	------------------------	-----------------------------	---

# RNAV (GPS) RWY 29L

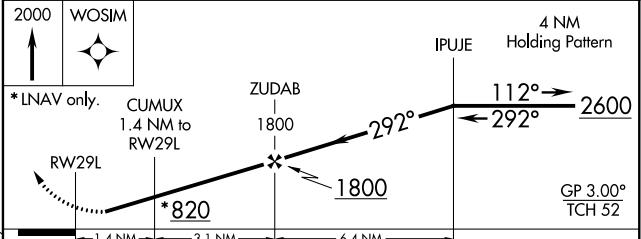
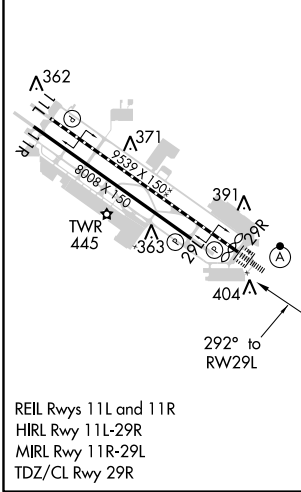
FRESNO YOSEMITE INTL (FAT)

▼ For uncompensated Baro-VNAV systems, LNAV/VNAV NA below 0°C (32°F) or above 54°C (130°F). DME/DME RNP-0.3 NA. Helicopter visibility reduction below ¾ SM NA. MISSED APPROACH: Climb to 2000 direct WOSIM and hold.

ATIS <b>121.35 273.6</b>	FRESNO APP CON <b>119.6 351.95</b>	FRESNO TOWER <b>118.2 251.1</b>	GND CON <b>121.7 348.6</b>	CLNC DEL <b>124.35 348.6</b>
-----------------------------	---------------------------------------	------------------------------------	-------------------------------	---------------------------------



ELEV 336	<b>D</b>	TDZE 331
----------	----------	----------



CATEGORY	A	B	C	D
LPV DA		581-¾	250 (300-¾)	
LNAV/VNAV DA		667-1½	336 (400-1½)	
LNAV MDA	760-1	429 (500-1)	760-1¼	429 (500-1¼)
<b>C</b> CIRCLING	820-1	484 (500-1)	920-1½ 584 (600-1½)	920-2 584 (600-2)

SW-2, 20 JUN 2019 to 18 JUL 2019

SW-2, 20 JUN 2019 to 18 JUL 2019