

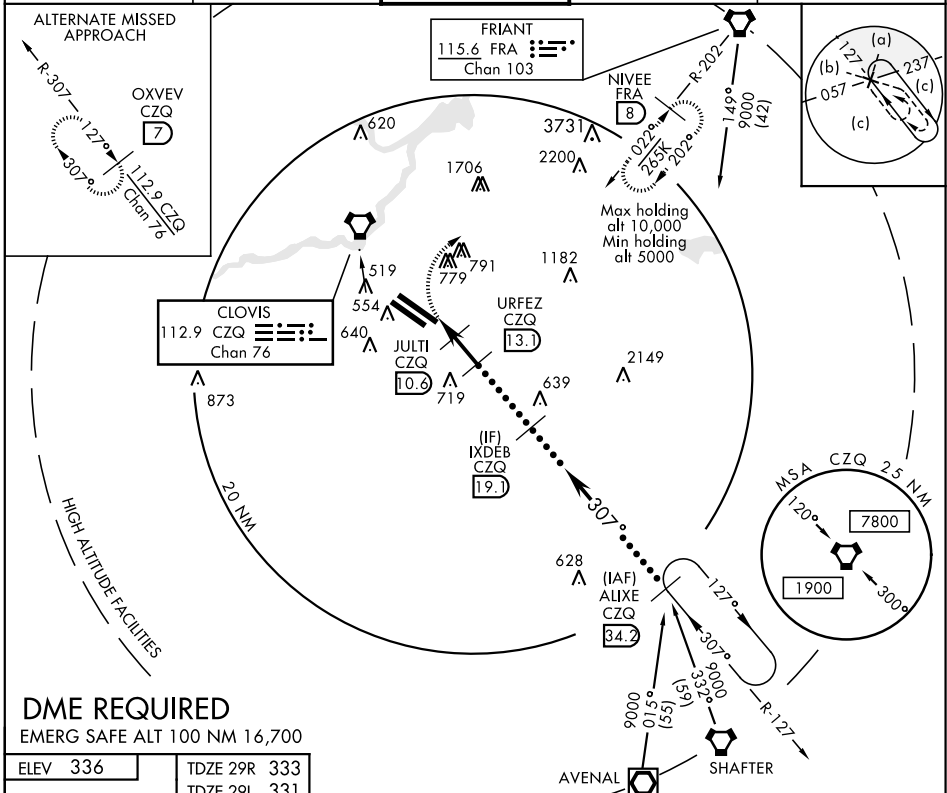
HI-VOR or TACAN RWY 29R

VORTAC CZQ 112.9 Chan 76	APCH CRS 307°	Rwy Idg 29R 9227 29L 8008 TDZE 29R 333 29L 331 Arpt Elev 336
--	-------------------------	---

JAL-162 [USAF] FRESNO YOSEMITE INTL (KFAT)

ALSF-2 MISSED APPROACH: Climb to 5000 on heading 326° and FRA VORTAC R-202 to NIVEE INT (FRA 8 DME) and hold, continue climb in hold to 5000.
 * When ALS inop, increase CAT CDE vis to 1¼ miles.

ATIS 121.35 273.6	FRESNO APP CON 132.35 323.25	FRESNO TOWER 118.2 251.1	GND CON 121.7 348.6	CLNC DEL 124.35 348.6
-----------------------------	--	------------------------------------	-------------------------------	---------------------------------



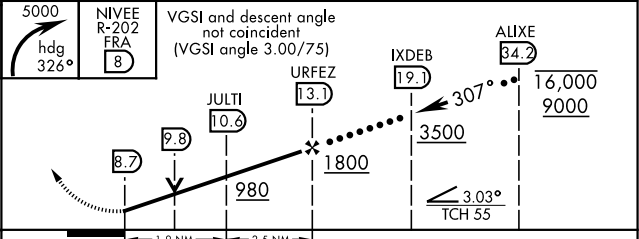
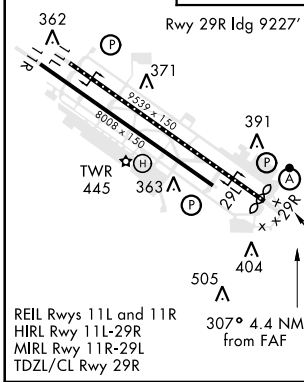
SW-2, 20 JUN 2019 to 18 JUL 2019

SW-2, 20 JUN 2019 to 18 JUL 2019

DME REQUIRED

EMERG SAFE ALT 100 NM 16,700

ELEV 336	TDZE 29R 333
	TDZE 29L 331



CATEGORY	C	D	E
S-29R *	760/40	427	(500-¾)
SIDESTEP 29L	760-1½	429	(500-1½)
CIRCLING	920-1½	920-2	1140-2¾
	584 (600-1½)	584 (600-2)	804 (900-2¾)

HI-VOR or TACAN RWY 29R