

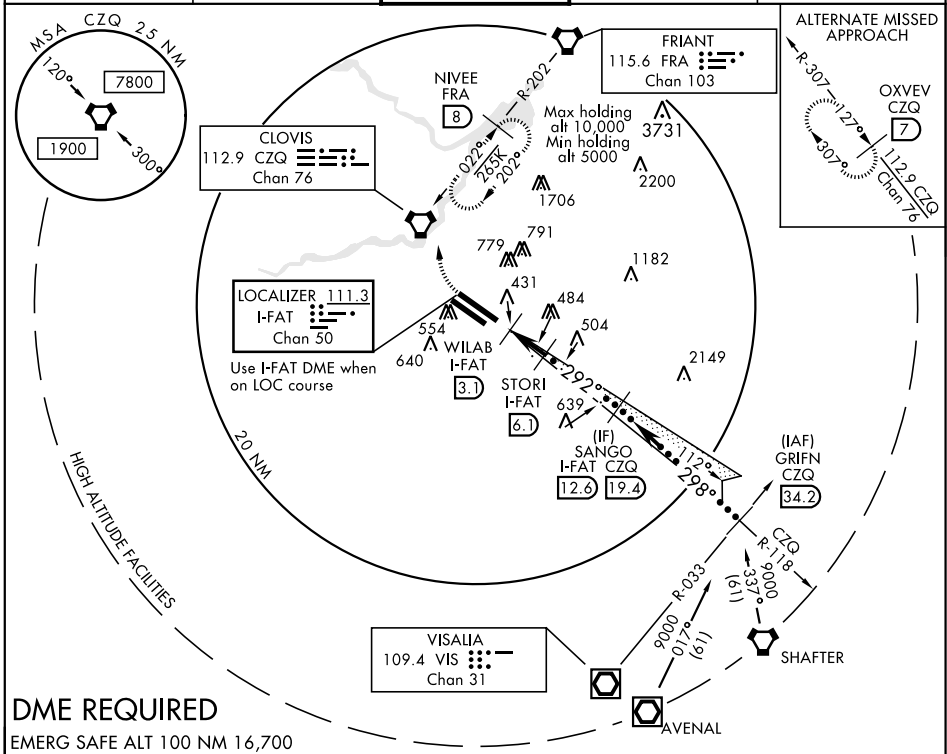
HI-ILS Z or LOC Z RWY 29R

LOC/DME I-FAT 111.3 Chan 50	APCH CRS 292°	Rwy Idg 29R 9227 29L 8008 TDZE 29R 333 29L 331 Arpt Elev 336
---	-------------------------	---

JAL-162 [USAF] FRESNO YOSEMITE INTL (KFAT)

▲ * When ALS inop, incr CAT CDE RVR to 40 and vis to 3/4 mile.
 ** When ALS inop, incr CAT CDE RVR to 55 and vis to 1 mile.

ATIS 121.35 273.6	FRESNO APP CON 132.35 323.25	FRESNO TOWER 118.2 251.1	GND CON 121.7 348.6	CLNC DEL 124.35 348.6
-----------------------------	--	------------------------------------	-------------------------------	---------------------------------



DME REQUIRED

EMERG SAFE ALT 100 NM 16,700

800	5000	NIVEE R-202 FRA 8	↑ LOC Only	SANGO I-FAT CZQ 12.6 19.4	GRIFN CZQ R-118 34.2	ELEV 336	TDZE 29R 333 TDZE 29L 331
VGS1 and ILS glidepath not coincident. (VGS1 Angle 3.00/76)		WILAB I-FAT 3.1	STORI I-FAT 6.1	Intep LOC 298°	16,000	Rwy 29R Idg 9227'	
I-FAT DME 1.7 I-FAT 1.7 1820 1800 GS 3.00° TCH 58		1.4 NM 3 NM		3500	9000	TWR 445 363 371 391 404 292° 4.4 NM from FAF	
CATEGORY	C	D	E				
S-ILS 29R*	533/18	200	(200-1/2)				
S-LOC 29R**	700/35	367	(400-3/4)				
SIDE STEP RWY 29L	700-1 1/2 369 (400-1 1/2)	700-2	369 (400-2)	REIL Rwy 11L and 11R HIRL Rwy 11L-29R MIRL Rwy 11R-29L TDZL/CL Rwy 29R			
CIRCLING	920-1 1/2 584 (600-1 1/2)	920-2	584 (600-2)	1140-2 3/4 804 (900-2 3/4)			

HI-ILS Z or LOC Z RWY 29R

SW-2, 20 JUN 2019 to 18 JUL 2019

SW-2, 20 JUN 2019 to 18 JUL 2019