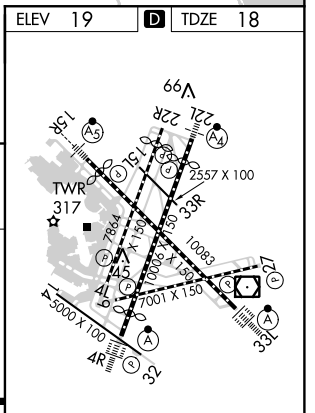
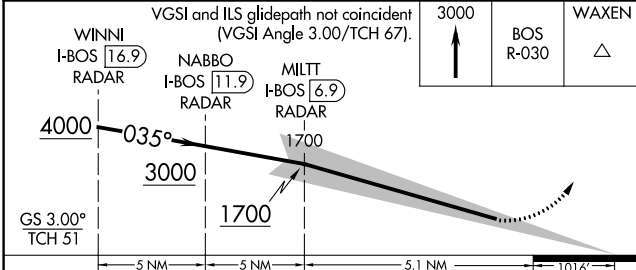
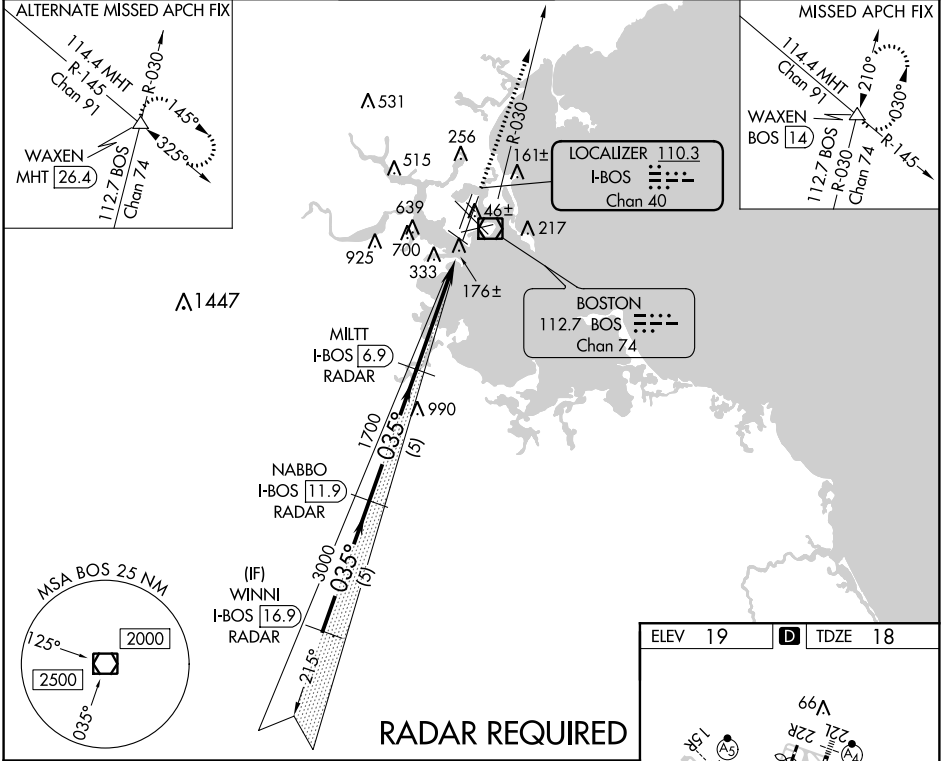


LOC/DME I-BOS <b>110.3</b> Chan <b>40</b>	APP CRS <b>035°</b>	Rwy Idg <b>8851</b> TDZE <b>18</b> Apt Elev <b>19</b>
---	------------------------	---

# ILS RWY 4R (SA CAT I)

GENERAL EDWARD LAWRENCE LOGAN INTL (BOS)

<p>When control tower reports tall vessels in approach area, procedure NA. Requires specific OPSPEC, MPSEC, or LOA approval and use of HUD to DH.</p>	ALS-F-2 	MISSED APPROACH: Climb to 3000 on BOS VOR/DME R-030 to WAXEN INT/BOS 14 DME and hold.			
	D-ATIS <b>135.0</b>	BOSTON APP CON <b>120.6 263.1</b>	BOSTON TOWER <b>128.8 257.8</b>	GND CON <b>121.9</b>	CLNC DEL <b>121.65 257.8</b>



CATEGORY	A	B	C	D
S-ILS 4R	RA 168/14 150 DA 168			

**SA CATEGORY I ILS - SPECIAL AIRCREW & AIRCRAFT CERTIFICATION REQUIRED**

TDZ/CL Rwy's  
4R, 15R and 33L  
REIL Rwy's 4L, 27 and 32  
MIRL Rwy 15L-33R  
HIRL Rwy's 4L-22R, 4R-22L,  
9-27, 14-32 and 15R-33L

NE-1, 20 JUN 2019 to 18 JUL 2019

NE-1, 20 JUN 2019 to 18 JUL 2019