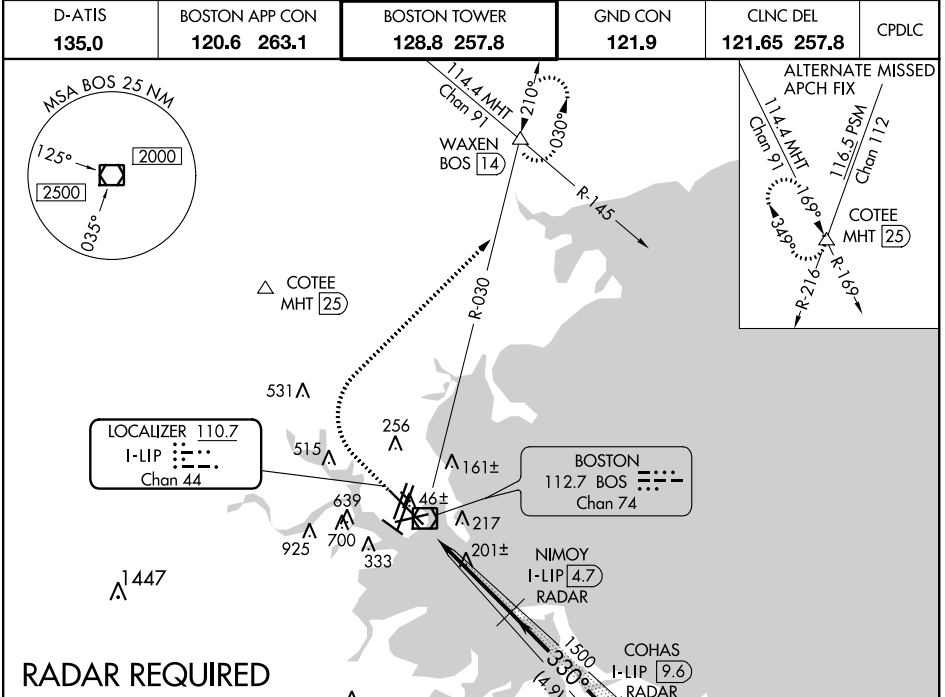


LOC/DME 110.7 Chan 44	I-LIP 330°	APP CRS 10083	Rwy Idg TDZE 16 Apt Elev 19
------------------------------------	----------------------	-------------------------	---

ILS RWY 33L (SA CAT I)

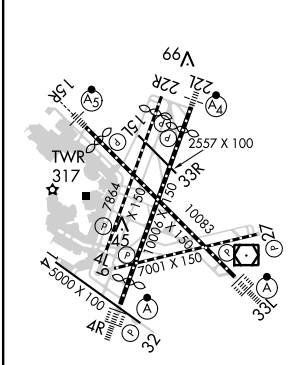
GENERAL EDWARD LAWRENCE LOGAN INTL (BOS)

DME or RADAR required. Requires specific OPSPEC, MSPEC, or LOA approval and use of HUD to DH.	ALSIF-2	MISSED APPROACH: Climb to 1500 then climbing right turn to 3000 on BOS VOR/DME R-030 to WAXEN INT/BOS 14 DME and hold.			
		D-ATIS 135.0	BOSTON APP CON 120.6 263.1	BOSTON TOWER 128.8 257.8	GND CON 121.9

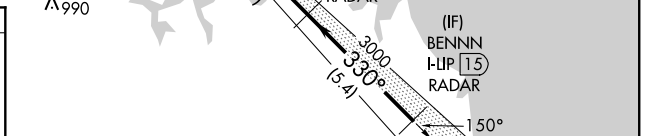


RADAR REQUIRED

ELEV 19	D	TDZE 16
---------	----------	---------



TDZ/CL Rwy 4R, 15R and 33L
REIL Rwy 4L, 27 and 32
MIRL Rwy 15L-33R
HIRL Rwy 4L-22R, 4R-22L,
9-27, 14-32 and 15R-33L



1500	3000	WAXEN △	VGSI and ILS glidepath not coincident (VGSI Angle 3.00/TCH 68).	BENNN I-LIP 15 RADAR
		BOS R-030		COHAS I-LIP 9.6 RADAR
			NIMOY I-LIP 4.7 RADAR	
				GS 3.00° TCH 57

CATEGORY	A	B	C	D
S-ILS 33L	RA 166/14 150 DA 166			

SA CATEGORY I - SPECIAL AIRCREW & AIRCRAFT CERTIFICATION REQUIRED

NE-1, 20 JUN 2019 to 18 JUL 2019

NE-1, 20 JUN 2019 to 18 JUL 2019