

WAAS CH 90531 W07A	APP CRS 068°	Rwy Idg 4400 TDZE 650 Apt Elev 650
--	------------------------	---

RNAV (GPS) RWY 7

MARION-CRITTENDEN COUNTY (5M9)

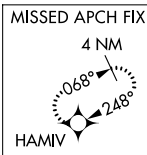
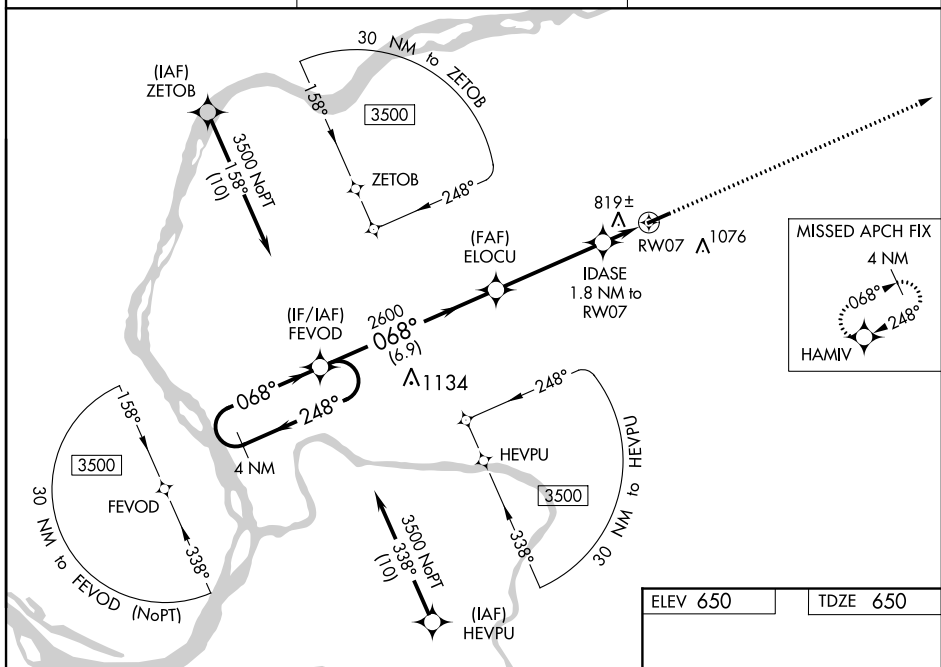
⚠ Baro-VNAV NA when using Henderson altimeter setting. For uncompensated Baro-VNAV systems, LNAV/VNAV NA below -16°C (4°F) or above 54°C (130°F). DME/DME RNP-0.3 NA. Night landing: Rwy 7 NA. Helicopter visibility reduction below 1 SM NA. When local altimeter setting not received, use Henderson altimeter setting and increase all DA 117 feet, increase all MDA 120 feet, increase all LPV visibility ¼ mile, increase all LNAV/VNAV visibility ½ mile, increase LNAV Cats C and D visibility ¾ mile, increase Circling Cat B visibility ¼ mile, increase Circling Cat C and D visibility ½ mile.

MISSED APPROACH:
Climb to 3500 direct HAMIV and hold.

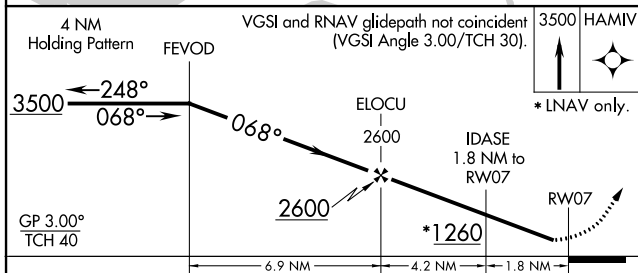
AWOS-3P
118.15

MEMPHIS CENTER
133.65 292.15

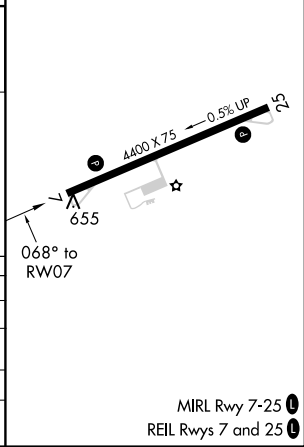
CTAF
122.9



ELEV 650	TDZE 650
----------	----------



CATEGORY	A	B	C	D
LPV DA		900-1	250 (300-1)	
LNAV/VNAV DA		1132-1½	482 (500-1½)	
LNAV MDA	1080-1	430 (500-1)	1080-1¼	430 (500-1¼)
C CIRCLING	1180-1 530 (600-1)	1360-1 710 (800-1)	1380-2 730 (800-2)	1380-2¼ 730 (800-2¼)



SE-1, 23 MAY 2019 to 20 JUN 2019

SE-1, 23 MAY 2019 to 20 JUN 2019