

WAAS CH 86631 W25A	APP CRS 248°	Rwy Idg TDZE Apt Elev	4400 643 650
--	------------------------	-----------------------------	---

RNAV (GPS) RWY 25

MARION-CRITTENDEN COUNTY (5M9)

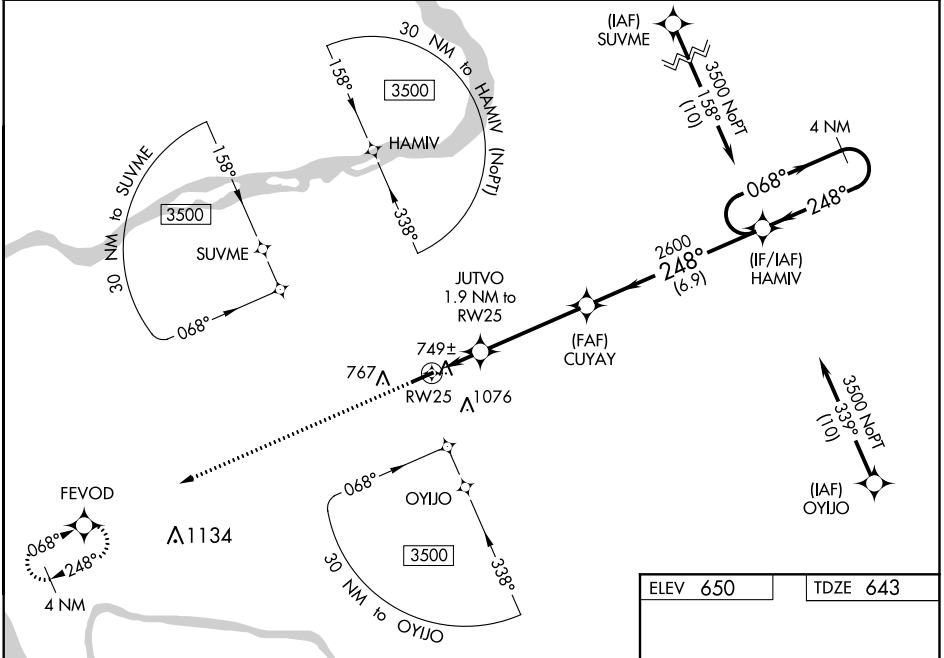
⚠ Baro-VNAV NA when using Henderson altimeter setting. For uncompensated Baro-VNAV systems, LNAV/VNAV NA below -16°C (4°F) or above 54°C (130°F). DME/DME RNP-0.3 NA. VDP NA with Henderson altimeter setting. Night landing Rwy 7 NA. Cat C and D procedure NA at night. When local altimeter setting not received, use Henderson altimeter setting and increase all DA 117 feet, and all MDA 120 feet, increase all LPV and LNAV/VNAV all Cats visibility $\frac{3}{8}$ mile. Increase Circling Cat B visibility $\frac{1}{4}$ mile.

MISSED APPROACH:
Climb to 3500 direct FEVOD and hold.

AWOS-3P
118.15

MEMPHIS CENTER
133.65 292.15

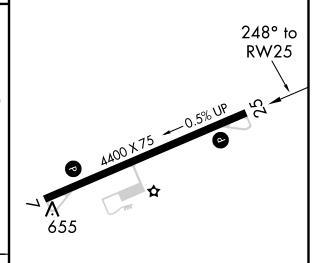
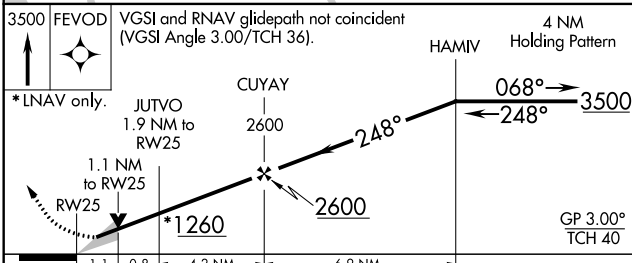
CTAF
122.9



SE-1, 23 MAY 2019 to 20 JUN 2019

SE-1, 23 MAY 2019 to 20 JUN 2019

ELEV 650	TDZE 643
----------	----------



CATEGORY	A	B	C	D
LPV DA		893- $\frac{7}{8}$	250 (300- $\frac{7}{8}$)	
LNAV/VNAV DA		945-1 $\frac{1}{8}$	302 (300-1 $\frac{1}{8}$)	
LNAV MDA		1000-1	357 (400-1)	
C CIRCLING	1180-1 530 (600-1)	1360-1 710 (800-1)	1380-1 $\frac{1}{2}$ 730 (800-1 $\frac{1}{2}$)	1380-2 $\frac{1}{4}$ 730 (800-2 $\frac{1}{4}$)

MIRL Rwy 7-25 **1**
REIL Rwy 7 and 25 **1**