

NDB UOT 326	APP CRS 061°	Rwy Idg 3508
		TDZE 604
		Apt Elev 610

NDB RWY 5

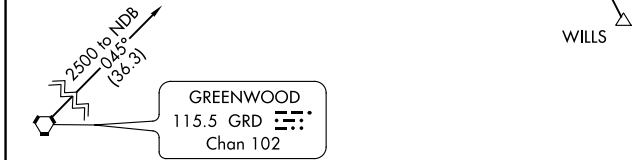
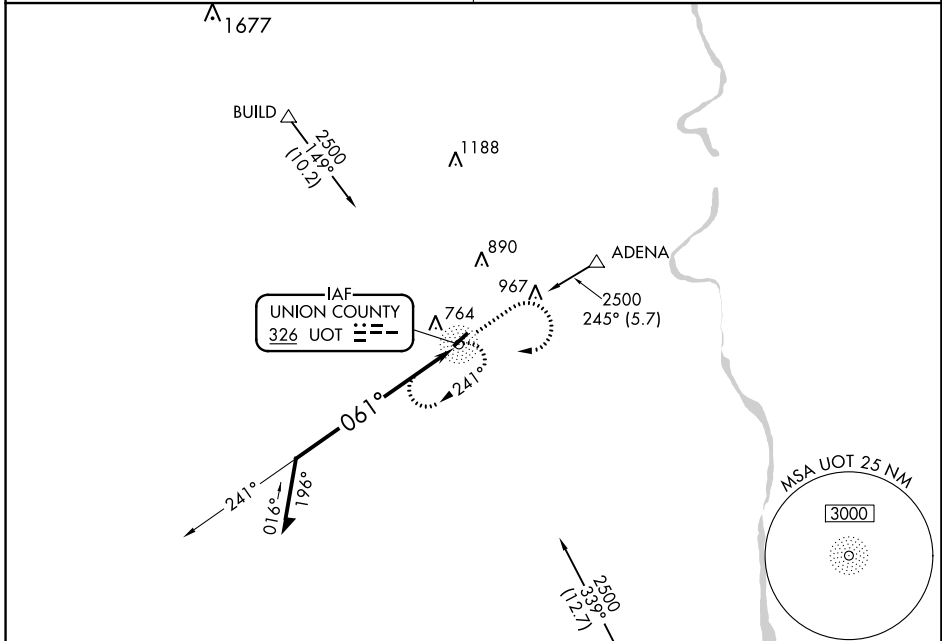
UNION COUNTY, TROY SHELTON FIELD (35A)

Procedure NA at night.
Helicopter visibility reduction below 1 SM NA.
Use Greer altimeter setting.

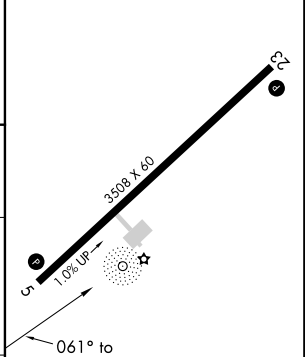
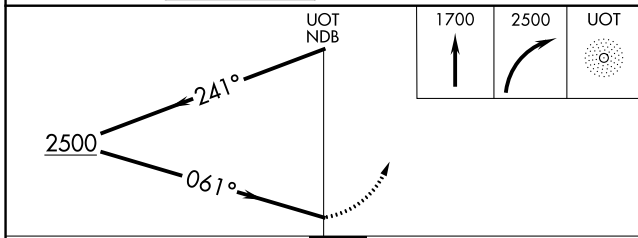
MISSED APPROACH: Climb to 1700 then climbing right turn to 2500 direct UOT NDB and hold.

GREER APP CON ★
119.4 350.2

UNICOM
122.7 (CTAF) 0



ELEV 610	TDZE 604
----------	----------



CATEGORY	A	B	C	D
S-5	1360-1 756 (800-1)	1360-1¼ 756 (800-1¼)		NA
CIRCLING	1360-1 750 (800-1)	1360-1¼ 750 (800-1¼)		NA

MIRL Rwy 5-23 0

SE-2, 23 MAY 2019 to 20 JUN 2019

SE-2, 23 MAY 2019 to 20 JUN 2019