

APP CRS	Rwy Idg	<b>3599</b>
<b>004°</b>	TDZE	<b>620</b>
	Apt Elev	<b>629</b>

# RNAV (GPS) RWY 36

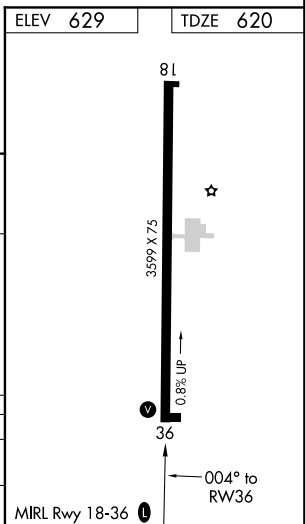
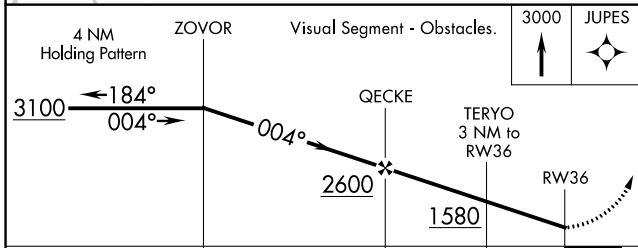
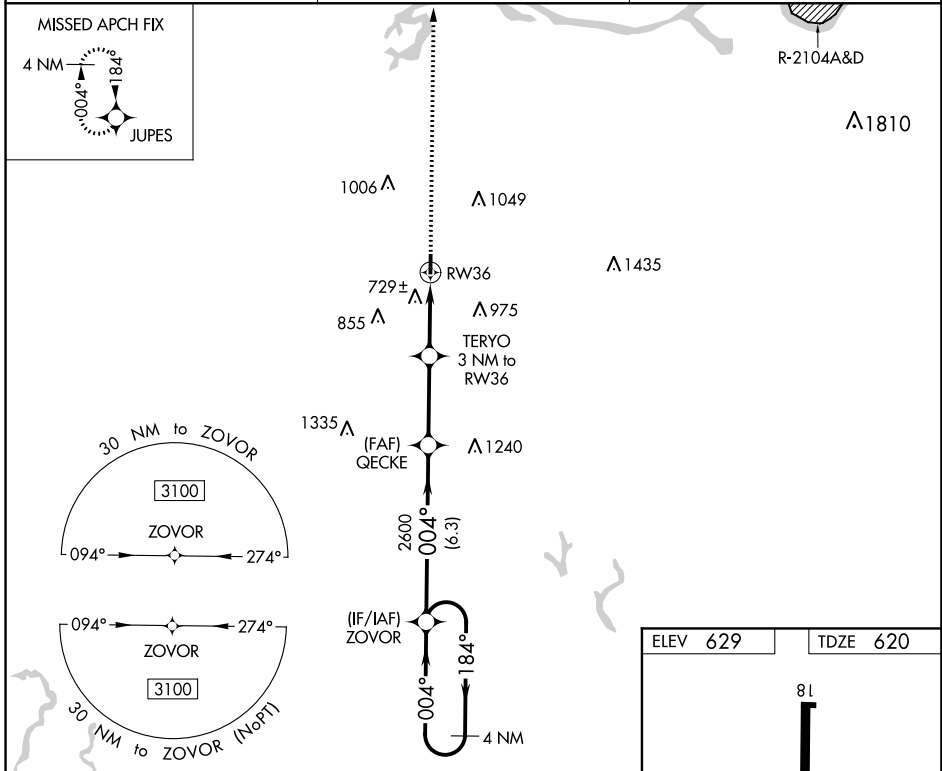
HARTSELLE-MORGAN COUNTY RGNL (5M $\emptyset$ )

**RNP APCH.**

**NA** Procedure NA at night. Rwy 36 helicopter visibility reduction below 1 SM NA. Use Huntsville Intl-Carl T Jones altimeter setting; when not received, use Cullman altimeter setting and increase all MDA 40 feet.

**MISSED APPROACH:** Climb to 3000 direct JUPES and hold.

HUNTSVILLE INTL-CARL T. JONES FIELD ATIS <b>121.25</b>	HUNTSVILLE APP CON ★ <b>118.05 239.0</b>	UNICOM <b>122.8 (CTAF) <math>\emptyset</math></b>
--	---	--



CATEGORY	A	B	C	D
LNVA MDA	1020-1	400 (400-1)	1020-1 $\frac{1}{8}$ 400 (400-1 $\frac{1}{8}$ )	NA
<b>C</b> CIRCLING	1120-1 491 (500-1)	1260-1 631 (700-1)	1520-2 $\frac{3}{4}$ 891 (900-2 $\frac{3}{4}$ )	NA

SE-4, 23 MAY 2019 to 20 JUN 2019

SE-4, 23 MAY 2019 to 20 JUN 2019