

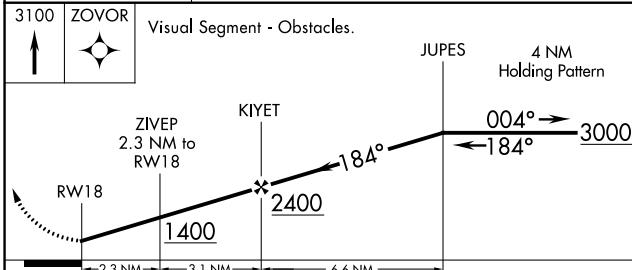
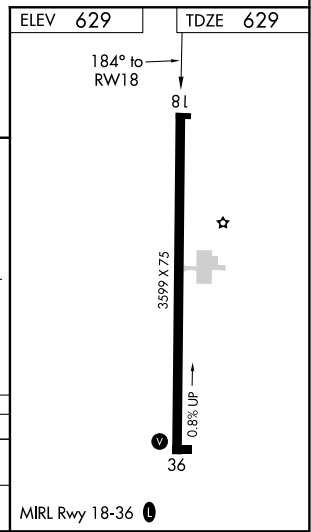
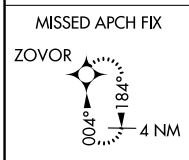
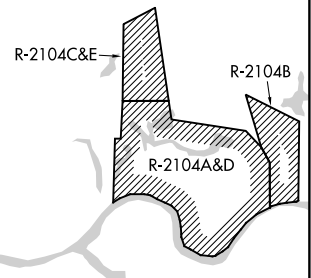
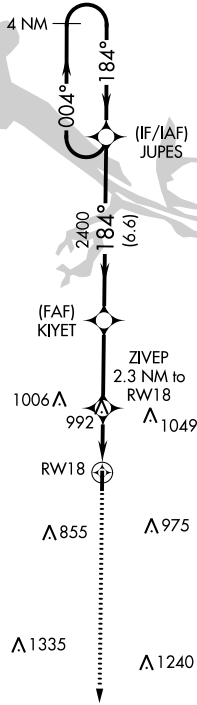
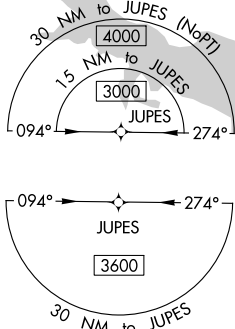
APP CRS **184°**
 Rwy Idg **3599**
 TDZE **629**
 Apt Elev **629**

RNAV (GPS) RWY 18
 HARTSELLE-MORGAN COUNTY RGNL (5M \emptyset)

RNP APCH. Procedure NA at night. Rwy 18 helicopter visibility reduction below 1 SM NA.
 Use Huntsville Intl-Carl T Jones altimeter setting; when not received, use Cullman altimeter setting and increase all MDA 40 feet.

MISSED APPROACH: Climb to 3100 direct ZOVOR and hold.

HUNTSVILLE INTL-CARL T. JONES FIELD ATIS **121.25** HUNTSVILLE APP CON ★ **118.05 239.0** UNICOM **122.8 (CTAF) \emptyset**



CATEGORY	A	B	C	D
LNVA MDA	1280-1	651 (700-1)	1280-1 $\frac{7}{8}$ 651 (700-1 $\frac{7}{8}$)	NA
C CIRCLING	1280-1	651 (700-1)	1520-2 $\frac{3}{4}$ 891 (900-2 $\frac{3}{4}$)	NA

MIRL Rwy 18-36 \emptyset

SE-4, 23 MAY 2019 to 20 JUN 2019

SE-4, 23 MAY 2019 to 20 JUN 2019