

APP CRS 254°	Rwy Idg TDZE Apt Elev	2877 371 372
------------------------	-----------------------------	---

RNAV (GPS) RWY 25

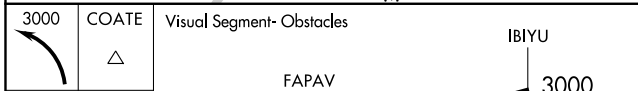
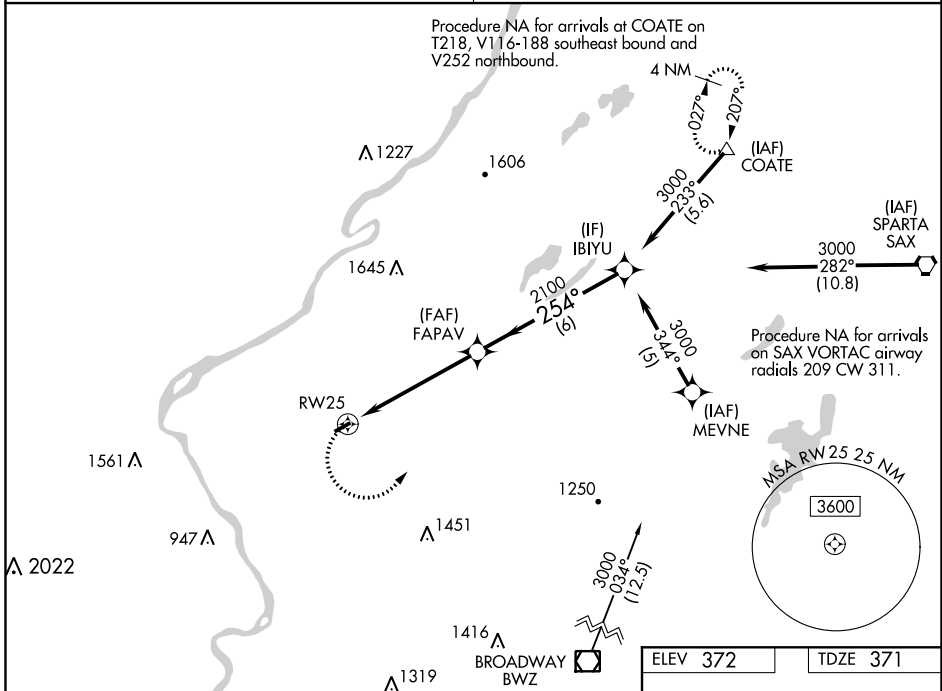
BLAIRSTOWN (1N7)

NA DME/DME RNP-0.3 NA. Procedure NA at night. Obtain local altimeter setting on CTAF; when not received, use Lehigh Valley Intl altimeter setting. Helicopter visibility reduction below 1 SM NA.

MISSED APPROACH: Climbing left turn to 3000 direct COATE and hold. When authorized by ATC, continue climb-in-hold to 4000.

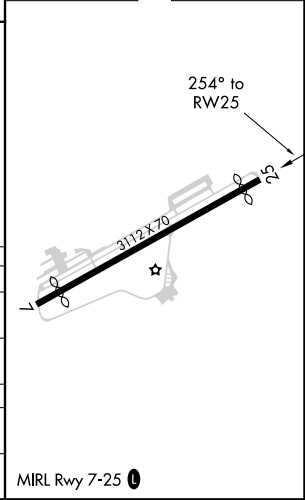
NEW YORK APP CON
127.6 379.9

UNICOM
123.0 (CTAF) 0



CATEGORY	A	B	C	D
LEHIGH VALLEY INTL ALTIMETER SETTING MINIMUMS				
LNVA MDA	1540-1¼ 1169 (1200-1¼)	1540-1½ 1169 (1200-1½)		NA
CIRCLING	1540-1¼ 1168 (1200-1¼)	1600-1½ 1228 (1300-1½)		NA

ELEV 372	TDZE 371
----------	----------



NE-2, 23 MAY 2019 to 20 JUN 2019

NE-2, 23 MAY 2019 to 20 JUN 2019