

KWEEN FOUR DEPARTURE (RNAV)

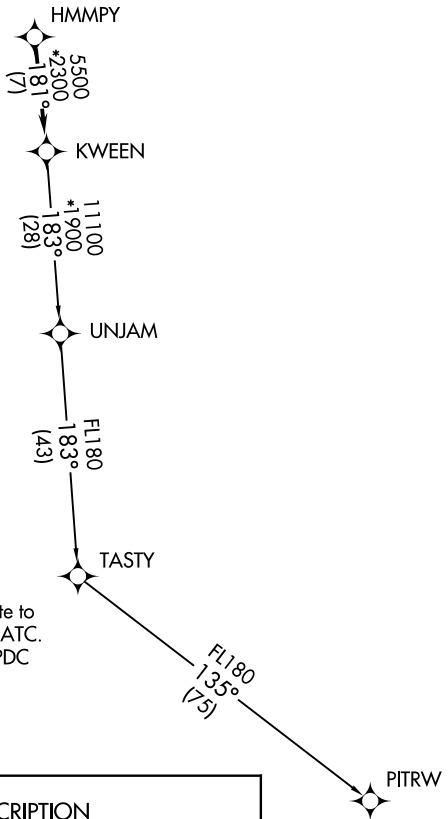
AWOS-3
128.175
CLNC DEL
121.75 254.375
GND CON
121.75 254.375
STANLY COUNTY TOWER ★
126.275 (CTAF) 291.9
UNICOM
123.0
CHARLOTTE DEP CON
128.325 307.8

TOP ALTITUDE:
3000



TAKEOFF MINIMUMS

Rwys 4L, 22R: NA.
Rwy 22L: Standard.
Rwy 4R: 300-1½ or standard with minimum
climb of 276' per NM to 1000.



- NOTE: For turbojets only.
- NOTE: DME/DME/IRU or GPS required.
- NOTE: RNAV 1.
- NOTE: RADAR required.
- NOTE: If unable to accept climb rates, advise ATC on initial contact.
- NOTE: Upon reaching 10000 MSL, accelerate to and maintain 280K, if unable advise ATC.
- NOTE: Transponder code will be issued via PDC or Charlotte CLNC DEL.

NOTE: Chart not to scale.

DEPARTURE ROUTE DESCRIPTION

Climb on heading assigned by ATC, expect RADAR vectors to HMPY, then on track 181° to KWEEN, then on assigned transition, maintain 3000, expect filed altitude within 10 minutes after departure.

PITRW TRANSITION (KWEEN4.PITRW)
UNJAM TRANSITION (KWEEN4.UNJAM)

KWEEN FOUR DEPARTURE (RNAV)

SE-2, 23 MAY 2019 to 20 JUN 2019

SE-2, 23 MAY 2019 to 20 JUN 2019