

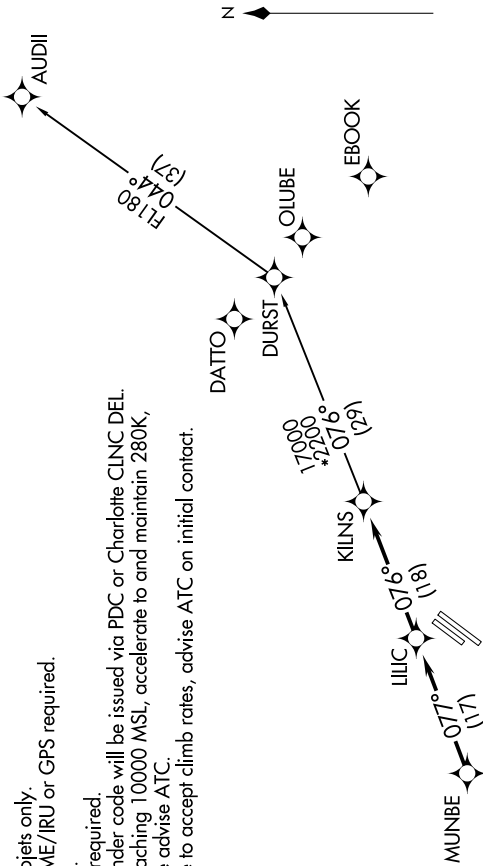
# KILNS FOUR DEPARTURE (RNAV)

SE-2, 23 MAY 2019 to 20 JUN 2019

AWOS-3  
128.175  
CLNC DEL  
121.75 254.375  
GND CON  
121.75 254.375  
STANLY COUNTY TOWER ★  
126.275 (CTAF) 291.9  
UNICOM  
123.0  
CHARLOTTE DEP CON  
128.325 307.8

NOTE: For turbojets only.  
NOTE: DME/DME/IRU or GPS required.  
NOTE: RNAV 1.  
NOTE: RADAR required.  
NOTE: Transponder code will be issued via PDC or Charlotte CLNC DEL.  
NOTE: Upon reaching 10000 MSL, accelerate to and maintain 280K, if unable advise ATC.  
NOTE: if unable to accept climb rates, advise ATC on initial contact.

**TOP ALTITUDE:  
3000**



**TAKEOFF MINIMUMS**  
Rwys 4L, 22R: NA.  
Rwy 22L: Standard.  
Rwy 4R: 300-1½ or standard with minimum climb of 276' per NM to 1000.

NOTE: Chart not to scale.

## DEPARTURE ROUTE DESCRIPTION

Climb on heading assigned by ATC, expect RADAR vectors to MUNBE, then on depicted route to KILNS, then on AUDII transition. Maintain 3000. Expect clearance to filed altitude within 10 minutes after departure.

**AUDII TRANSITION (KILNS4.AUDII)**

# KILNS FOUR DEPARTURE (RNAV)

SE-2, 23 MAY 2019 to 20 JUN 2019