

| | | | |
|---------------|-------------|----------|-------------|
| LOC I-VUJ | APP CRS | Rwy Idg | 5500 |
| 110.55 | 223° | TDZE | 584 |
| | | Apt Elev | 609 |

ILS or LOC RWY 22L

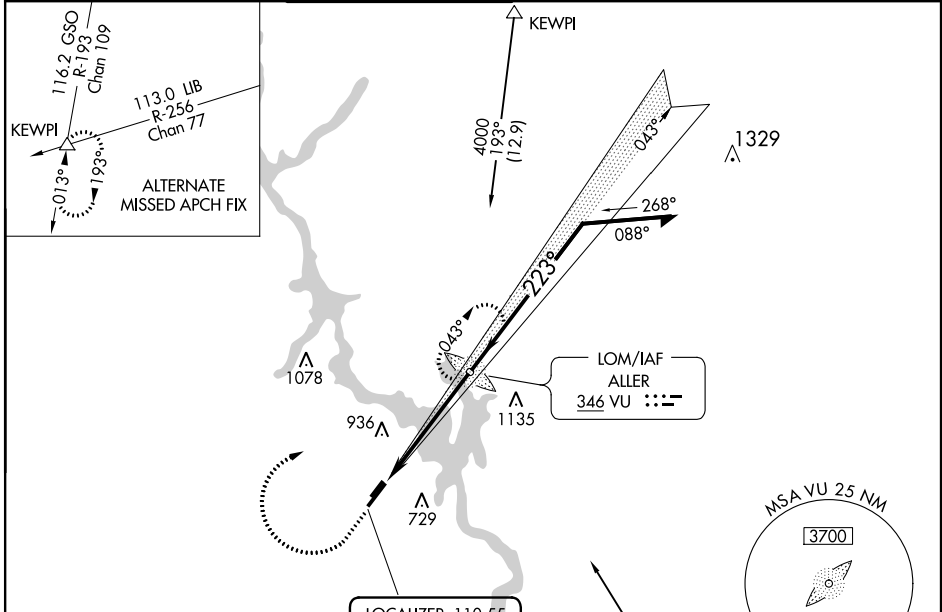
STANLY COUNTY (VUJ)

ADF required.

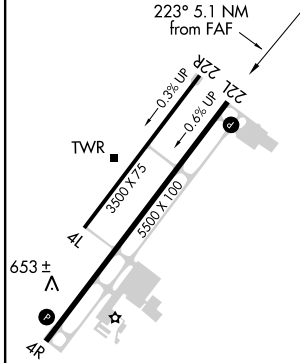
⚠ Circling Rwy 4L, 22R NA at night. When local altimeter setting not received, use Asheboro altimeter setting; increase DA to 953 and all visibilities 1/8 SM; ASR/PAR increase all MDAs 60 feet and visibility Cats C and D 1/4 SM.

MISSED APPROACH: Climb to 1500 then climbing right turn to 4000 direct ALLER LOM and hold, continue climb-in-hold to 4000.

| | | | | | |
|----------------|----------------------|-------------------------------|-----------------------|-----------------------|--------------|
| AWOS-3 | CHARLOTTE APP CON | STANLY COUNTY TOWER* | GND CON | CLNC DEL | UNICOM |
| 128.175 | 128.325 307.8 | 126.275 (CTAF) 0 291.9 | 121.75 254.375 | 121.75 254.375 | 123.0 |



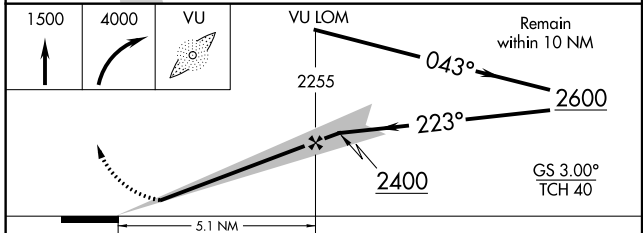
| | |
|----------|----------|
| ELEV 609 | TDZE 584 |
|----------|----------|



REIL Rwy 4R and 22L **Ⓛ**
MIRL Rwy 4R-22L and 4L-22R **Ⓛ**

FAF to MAP 5.1 NM

| | | | | | |
|---------|------|------|------|------|------|
| Knots | 60 | 90 | 120 | 150 | 180 |
| Min:Sec | 5:06 | 3:24 | 2:33 | 2:02 | 1:42 |



| CATEGORY | A | B | C | D |
|-----------|--------|-------------|---------------|-----------------------|
| S-ILS 22L | | 900-7/8 | 316 (300-7/8) | |
| S-LOC 22L | 1100-1 | 516 (500-1) | 1100-13/8 | 516 (500-13/8) |
| CIRCLING | 1260-1 | 651 (700-1) | 1260-13/4 | 1260-2 651 (700-2) |

SE-2, 23 MAY 2019 to 20 JUN 2019

SE-2, 23 MAY 2019 to 20 JUN 2019