

(ESTRR4.ESTRR) 19003

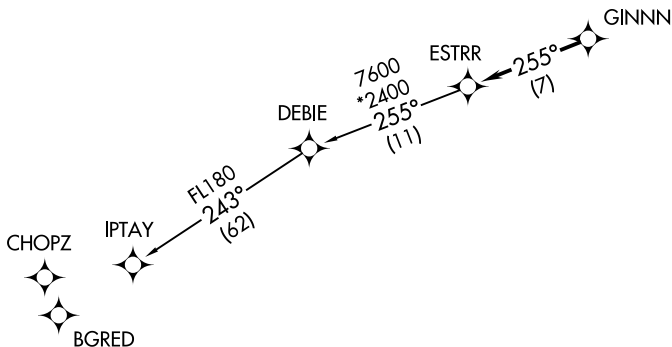
AL-6707 (FAA)

STANLY COUNTY (VUJ)  
ALBEMARLE, NORTH CAROLINA

# ESTRR FOUR DEPARTURE (RNAV)

**TOP ALTITUDE:**  
**3000**

AWOS-3  
128.175  
CLNC DEL  
121.75 254.375  
GND CON  
121.75 254.375  
STANLY COUNTY TOWER ★  
126.275 (CTAF) 291.9  
UNICOM  
123.0  
CHARLOTTE DEP CON  
128.325 307.8



### TAKEOFF MINIMUMS

Rwys 4L, 22R: NA.

Rwy 22L: Standard.

Rwy 4R: 300-1½ or standard with minimum climb of 276' per NM to 1000.

NOTE: For turbojets only.

NOTE: DME/DME/IRU or GPS required.

NOTE: RNAV 1.

NOTE: RADAR required.

NOTE: If unable to accept climb rates, advise ATC on initial contact.

NOTE: Upon reaching 10000 MSL, accelerate to and maintain 280K, if unable advise ATC.

NOTE: Chart not to scale.



### DEPARTURE ROUTE DESCRIPTION

Climb on heading assigned by ATC, expect RADAR vectors to GINNN, then on track 255° to ESTRR, then on IPTAY transition. Maintain 3000, expect clearance to filed altitude within 10 minutes after departure.

IPTAY TRANSITION (ESTRR4.IPTAY)

ESTRR FOUR DEPARTURE (RNAV)

(ESTRR4.ESTRR) 03JAN19

ALBEMARLE, NORTH CAROLINA  
STANLY COUNTY (VUJ)

SE-2, 23 MAY 2019 to 20 JUN 2019

SE-2, 23 MAY 2019 to 20 JUN 2019