

(BEAVY5.BEAVY) 19003

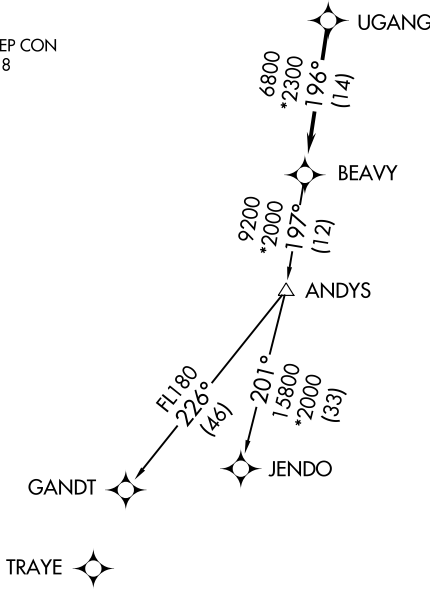
AL-6707 (FAA)

STANLY COUNTY (VUJ)
ALBEMARLE, NORTH CAROLINA

BEAVY FIVE DEPARTURE (RNAV)

TOP ALTITUDE:
3000

AWOS-3
128.175
CLNC DEL
121.75 254.375
GND CON
121.75 254.375
STANLY COUNTY TOWER ★
126.275 (CTAF) 291.9
UNICOM
123.0
CHARLOTTE DEP CON
128.325 307.8



TAKEOFF MINIMUMS

Rwys 4L, 22R: NA.
Rwy 22L: Standard.
Rwy 4R: 300-1½ or standard with minimum climb of 276' per NM to 1000.

- NOTE: For turbojets only.
- NOTE: DME/DME/IRU or GPS required.
- NOTE: RNAV 1.
- NOTE: RADAR required.
- NOTE: If unable to accept climb rates, advise ATC on initial contact.
- NOTE: Upon reaching 10000 MSL, accelerate to and maintain 280K, if unable advise ATC.
- NOTE: Transponder code will be issued via PDC or Charlotte CLNC DEL.

NOTE: Chart not to scale.

DEPARTURE ROUTE DESCRIPTION

Climb on heading assigned by ATC, expect RADAR vectors to UGANG, then on track 196° to BEAVY. Then on assigned transition. Maintain 3000, expect clearance to filed altitude within 10 minutes after departure.

GANDT TRANSITION (BEAVY5.GANDT)
JENDO TRANSITION (BEAVY5.JENDO)

BEAVY FIVE DEPARTURE (RNAV)

ALBEMARLE, NORTH CAROLINA
STANLY CONUTY (VUJ)

(BEAVY5.BEAVY) 03JAN19

SE-2: 23 MAY 2019 to 20 JUN 2019

SE-2: 23 MAY 2019 to 20 JUN 2019