

WAAS CH 40439 W01A	APP CRS 009°	Rwy Idg TDZE Apt Elev	4000 248 293
--	------------------------	-----------------------------	---

RNAV (GPS) RWY 1

AMBLER (AFM) (PAFM)

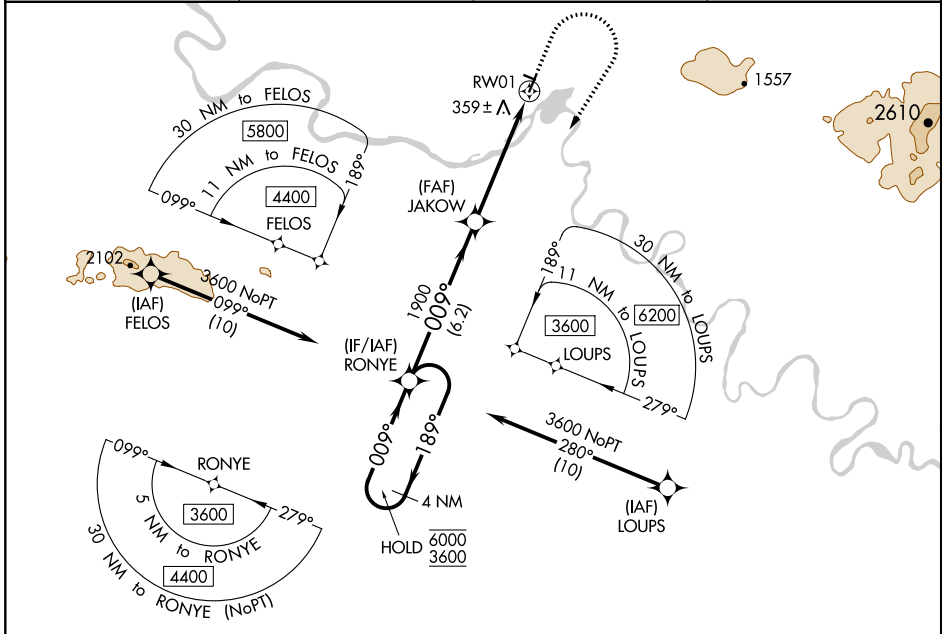
RNP APCH.

⚠ Circling NA west of Rwy 1-19. For uncompensated Baro-VNAV systems, LNAV/VNAV NA below -20°C or above 42°C.

❄ -42°C

MISSED APPROACH: Climb to 1000 then climbing right turn to 3600 direct RONYE and hold, continue climb-in-hold to 3600. # Missed approach requires minimum climb of 210 feet per NM to 2300.

AWOS-3P 132.1	ANCHORAGE CENTER 119.2 263.0	KOTZEBUE RADIO 122.0	CTAF 122.7 0
-------------------------	--	--------------------------------	------------------------



AK, 25 APR 2019 to 20 JUN 2019

AK, 25 APR 2019 to 20 JUN 2019

VGSI and RNAV glidepath not coincident (VGSI Angle 3.00/TCH 25).		1000	3600	RONYE	ELEV 293	TDZE 248
4 NM Holding Pattern					MIRL Rwy 1-19 and 10-28 0	
CATEGORY	A	B	C	D		
LPV DA#		498-1	250 (300-1)			
LPV DA		666-1 $\frac{3}{8}$	418 (400-1 $\frac{1}{8}$)			
LNAV/VNAV DA		791-1 $\frac{7}{8}$	543 (500-1 $\frac{1}{8}$)			
LNAV MDA	1000-1 752 (800-1)	1000-1 $\frac{1}{4}$ 752 (800-1 $\frac{1}{4}$)	1000-1 $\frac{7}{8}$ 752 (800-1 $\frac{7}{8}$)	752 (800-1 $\frac{7}{8}$)		
C CIRCLING	1000-1 707 (800-1)	1000-1 $\frac{1}{4}$ 707 (800-1 $\frac{1}{4}$)	1000-2 707 (800-2)	1000-2 $\frac{1}{4}$ 707 (800-2 $\frac{1}{4}$)		