

WAAS CH 86917 W05A	APP CRS 049°	Rwy Idg TDZE Apt Elev	5105 24 26
--	------------------------	-----------------------------	---------------------------------------

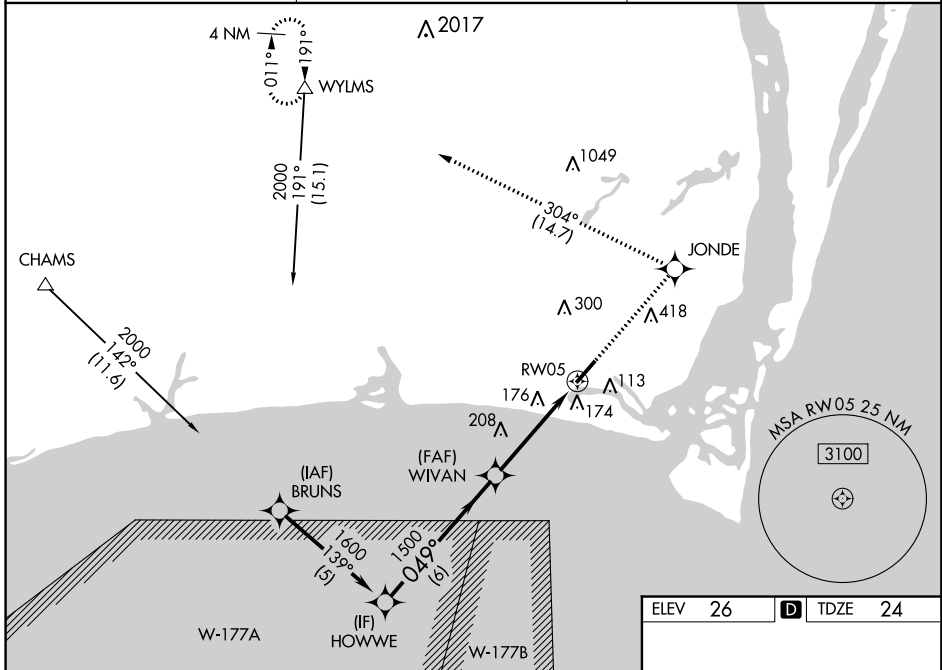
RNAV (GPS) RWY 5

CAPE FEAR RGNL JETPORT/HOWIE FRANKLIN FLD (SU'T)

▼ Baro-VNAV NA when using Wilmington altimeter setting. For uncompensated Baro-VNAV systems, LNAV/VNAV NA below -15°C (5°F) or above 54°C (130°F). DME/DME RNP-0.3 NA. Helicopter visibility reduction below 1 SM NA. When local altimeter setting not received, use Wilmington altimeter setting and increase all DA 53 feet and all MDA 60 feet; increase LNAV/VNAV all Cats visibility ¼ mile. VDP NA when using Wilmington altimeter setting.

MISSED APPROACH:
Climb to 3000 direct JONDE and left turn on track 304° to WYLSM and hold.

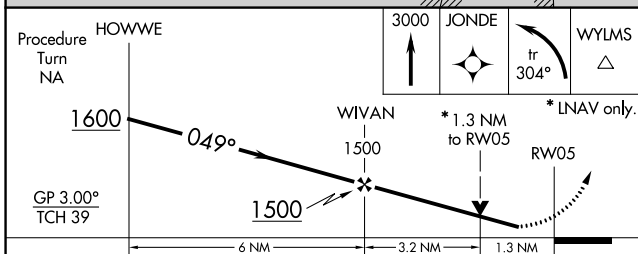
AWOS-3P 124.175	WILMINGTON APP CON 118.25 284.65	UNICOM 123.05 (CTAF) 0
---------------------------	--	----------------------------------



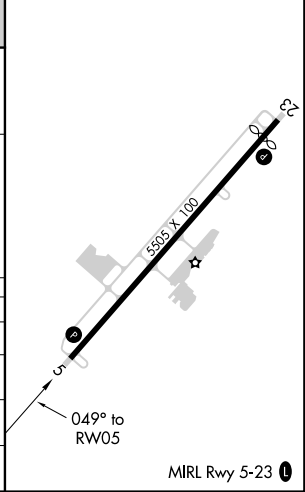
SE-2, 23 MAY 2019 to 20 JUN 2019

SE-2, 23 MAY 2019 to 20 JUN 2019

ELEV 26	D TDZE 24
---------	------------------



CATEGORY	A	B	C	D
LPV DA	274-1	250 (300-1)		NA
LNAV/VNAV DA	460-1½	436 (500-1½)		NA
LNAV MDA	460-1	436 (500-1)	460-1¼ 436 (500-1¼)	NA
CIRCLING	480-1	454 (500-1)	520-1½ 494 (500-1½)	NA



RNAV (GPS) RWY 5