

VORTAC PXR <b>115.6</b> Chan <b>103</b>	APP CRS <b>330°</b>	Rwy Idg TDZE Apt Elev <b>N/A</b> <b>N/A</b> <b>1177</b>
---	------------------------	--

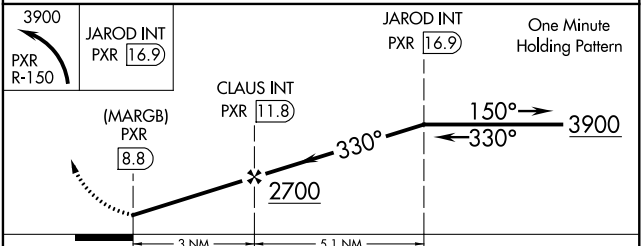
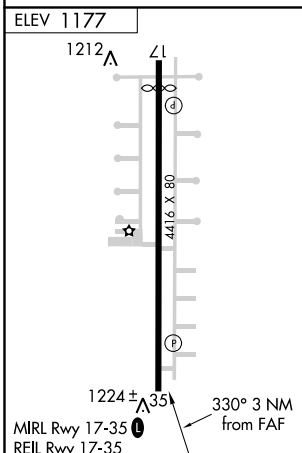
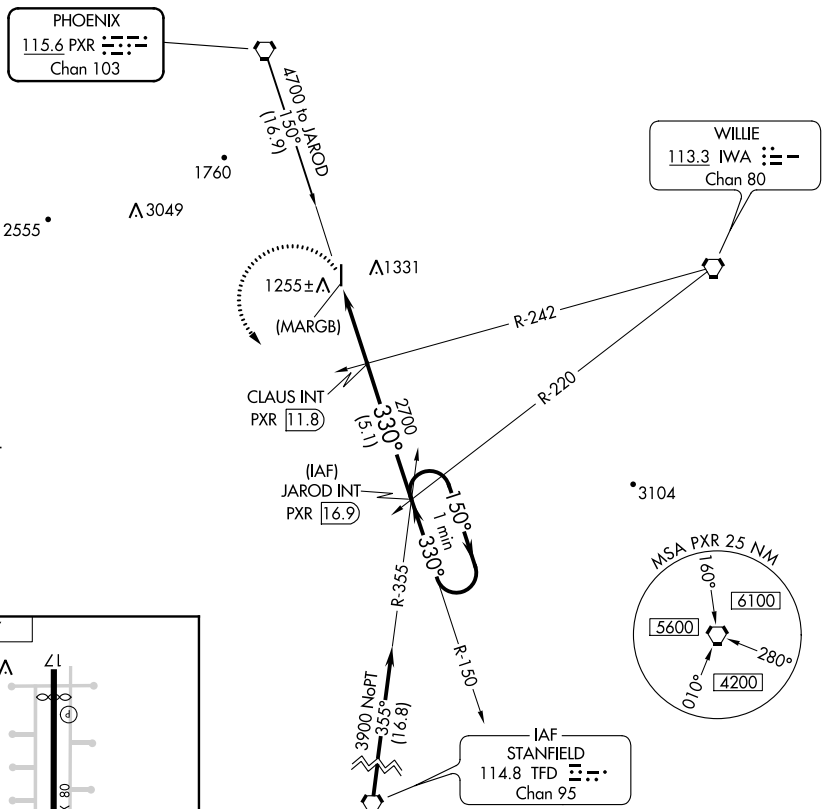
**VOR or GPS-A**  
STELLAR AIRPARK (P19)

**NA** Use Phoenix Sky Harbor Intl altimeter setting. Procedure not authorized at night.

MISSED APPROACH: Climbing left turn to 3900 via PXR R-150 to JAROD Int/PXR 16.9 DME and hold.

PHOENIX APP CON **123.7 363.0**

UNICOM **122.975(CTAF)**



FAF to MAP 3 NM					
Knots	60	90	120	150	180
Min:Sec	3:00	2:00	1:30	1:12	1:00
CATEGORY	A	B	C	D	
CIRCLING	1640-1 463 (500-1)	1640-1 463 (500-1)	1640-1½ 463 (500-1½)	NA	

SW-4, 23 MAY 2019 to 20 JUN 2019

SW-4, 23 MAY 2019 to 20 JUN 2019