

WAAS CH <b>77601</b> <b>W06A</b>	APP CRS <b>059°</b>	Rwy Idg TDZE Apt Elev	<b>3505</b> <b>831</b> <b>839</b>
--	------------------------	-----------------------------	---

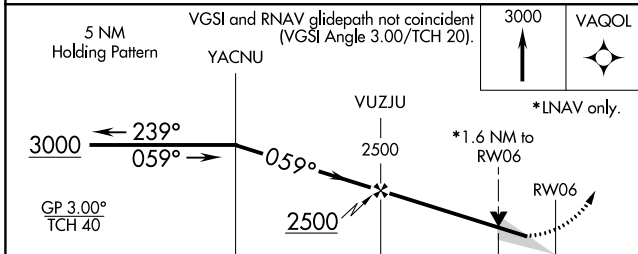
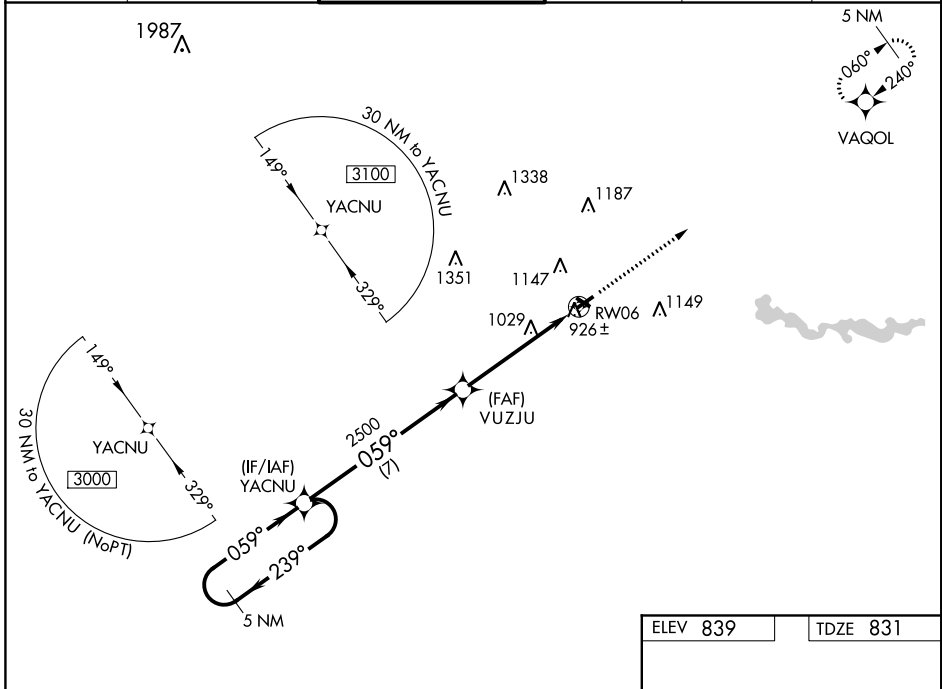
# RNAV (GPS) RWY 6

ANN ARBOR MUNI (ARB)

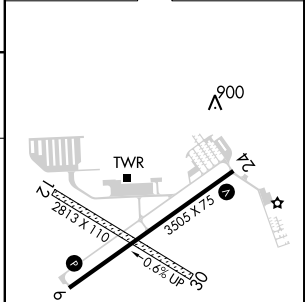
**⚠** For uncompensated Baro-VNAV systems, LNAV/VNAV NA below -16°C (4°F) or above 38°C (100°F). DME/DME RNP-0.3 NA. VDP and Baro-VNAV NA when using Willow Run altimeter setting. **⚠** Run altimeter setting. When local altimeter setting not received, use Willow Run altimeter setting and increase all DA/MDA 40 feet, increase LNAV Cts C and D visibility 1/8 mile, and increase Circling Cts C and D visibility 1/4 mile. Circling NA to Rwy 12 and 30.

MISSED APPROACH: Climb to 3000 direct VAQOL and hold.

ATIS <b>134.55</b>	DETROIT APP CON <b>118.95 284.0</b>	ANN ARBOR TOWER * <b>120.3 (CTAF) 0</b>	GND CON <b>121.6</b>	CLNC DEL <b>121.6</b>	UNICOM <b>123.0</b>
-----------------------	--	--	-------------------------	--------------------------	------------------------



ELEV 839	TDZE 831
----------	----------



CATEGORY	A	B	C	D
LPV DA		1081-1	250 (300-1)	
LNAV/VNAV DA		1097-1	266 (300-1)	
LNAV MDA	1360-1	529 (600-1)	1360-1 1/2	529 (600-1 1/2)
CIRCLING	1500-1	661 (700-1)	1500-1 3/4	661 (700-1 3/4)
			1500-2	661 (700-2)

MIRL Rwy 6-24 **0**  
REIL Rwy 6 **0**

EC-1, 23 MAY 2019 to 20 JUN 2019

EC-1, 23 MAY 2019 to 20 JUN 2019