

MIGGY ONE DEPARTURE (RNAV)

AL-5506 (FAA)

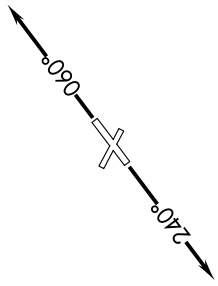
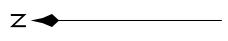
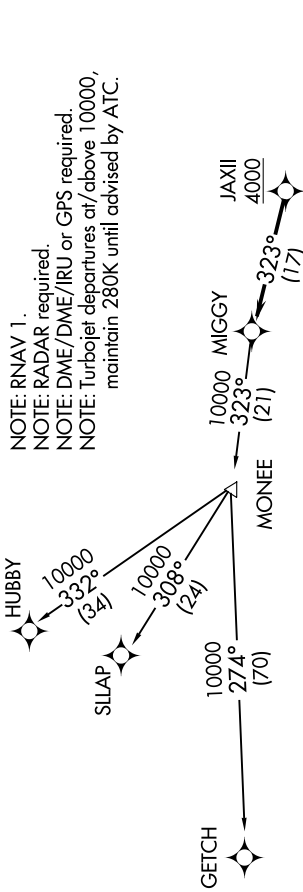
ANN ARBOR, MICHIGAN

EC-1, 23 MAY 2019 to 20 JUN 2019

**TOP ALTITUDE:
ASSIGNED BY ATC**

ATIS
134.55
CLNC DEL
121.6
GND CON
121.6
ANN ARBOR TOWER *
120.3 (CTAF)
DETROIT DEP CON
118.95 284.0

NOTE: RNAV 1.
NOTE: RADAR required.
NOTE: DME/DME/IRU or GPS required.
NOTE: Turbojet departures at/above 10000, maintain 280K until advised by ATC.



TAKEOFF MINIMUMS:
Rwys 6, 24: Standard.
Rwys 12, 30: NA-Environmental.

NOTE: Chart not to scale.

DEPARTURE ROUTE DESCRIPTION

TAKEOFF RUNWAY 6: Climb on heading 060° or as assigned for RADAR vectors to cross JAXII at or above 4000, thence...

TAKEOFF RUNWAY 24: Climb on heading 240° or as assigned for RADAR vectors to cross JAXII at or above 4000, thence...

....on track 323° to MIGGY, then on (transition). Maintain ATC assigned altitude, expect filed altitude 10 minutes after departure.

GETCH TRANSITION (MIGGY1.GETCH):
 HUBBY TRANSITION (MIGGY1.HUBBY):
 SILAP TRANSITION (MIGGY1.SILAP):

EC-1, 23 MAY 2019 to 20 JUN 2019