

(KAYLN1.KAYLN) 18200

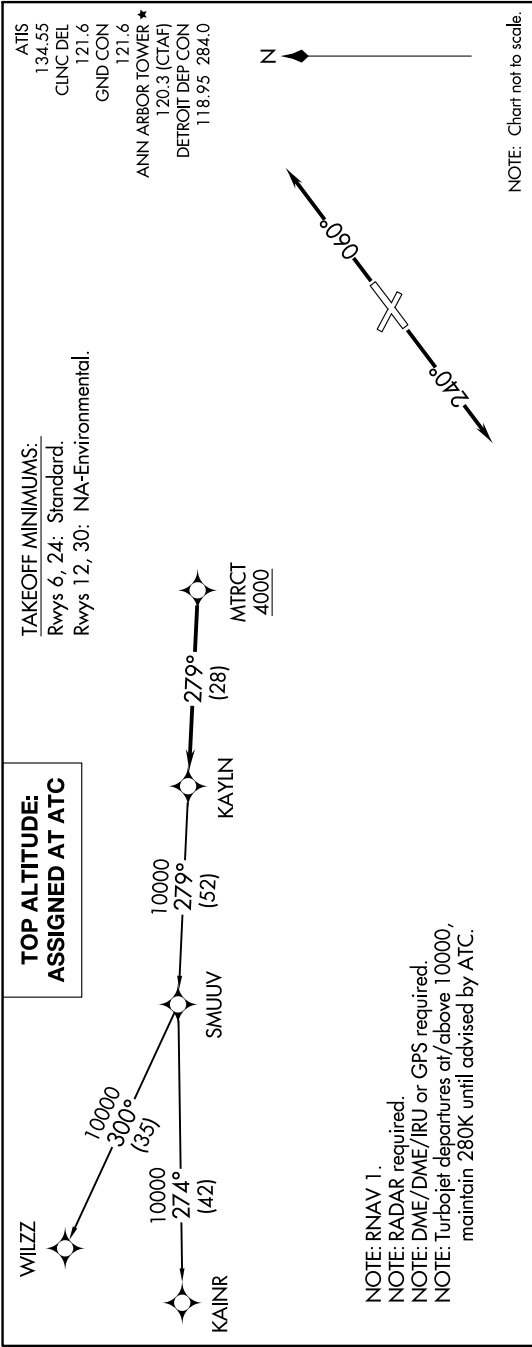
KAYLN ONE DEPARTURE (RNAV)

AL-5506 (FAA)

ANN ARBOR MUNI (ARB)

ANN ARBOR, MICHIGAN

EC-1, 23 MAY 2019 to 20 JUN 2019



DEPARTURE ROUTE DESCRIPTION

TAKEOFF RUNWAY 6: Climb on heading 060° or as assigned for RADAR vectors to cross MTRCT at or above 4000, thence....

TAKEOFF RUNWAY 24: Climb on heading 240° or as assigned for RADAR vectors to cross MTRCT at or above 4000, thence....

....on track 279° to KAYLN, then on (transition). Maintain ATC assigned altitude, expect filed altitude 10 minutes after departure.

KAINR TRANSITION (KAYLN1.KAINR):
SMUUV TRANSITION (KAYLN1.SMUUV):
WILZZ TRANSITION (KAYLN1.WILZZ):

KAYLN ONE DEPARTURE (RNAV)

(KAYLN1.KAYLN) 19JUL18

ANN ARBOR, MICHIGAN
ANN ARBOR MUNI (ARB)

EC-1, 23 MAY 2019 to 20 JUN 2019