

WAAS CH 72912 W24A	APP CRS 246°	Rwy Idg TDZE Apt Elev	3801 635 635
----------------------------------------	------------------------	-----------------------------	-----------------------------------------

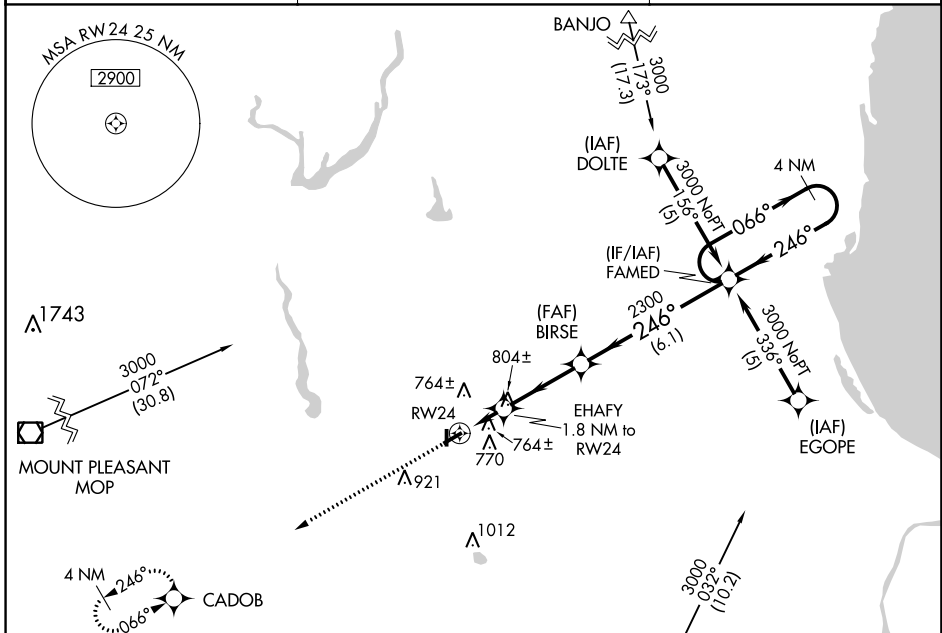
RNAV (GPS) RWY 24

JACK BARSTOW (IKW)

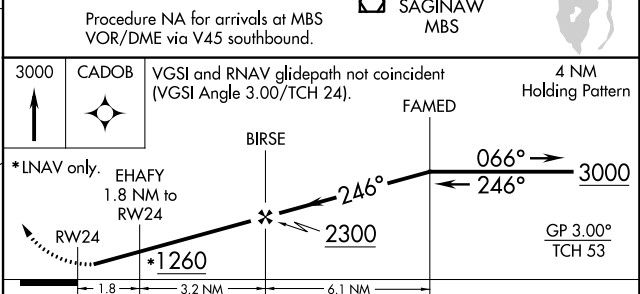
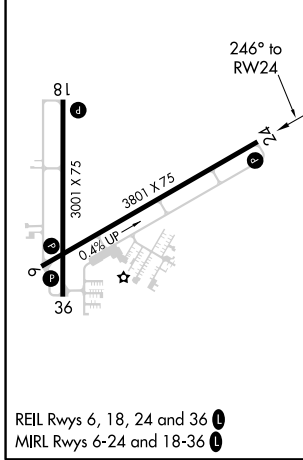
⚠ Baro-VNAV NA when using MBS Intl altimeter setting. For uncompensated Baro-VNAV systems, LNAV/VNAV NA below -16°C (4°F) or above 54°C (130°F). DME/DME RNP-0.3 NA. Rwy 24 helicopter visibility reduction below 3/4 SM NA. When local altimeter setting not received, use MBS Intl altimeter setting and increase all DA 31 feet and all MDA 40 feet and all LPV visibility 1/4 mile. Circling Rwy 18, 36 NA at night.

MISSED APPROACH:
Climb to 3000 direct CADOB and hold.

AWOS-3 119.525	SAGINAW APP CON ★ 126.45 235.625	UNICOM 122.8 (CTAF) ①
--------------------------	--------------------------------------------	---------------------------------



ELEV 635	TDZE 635
-----------------	-----------------



CATEGORY	A	B	C	D
LPV DA		1021-1¼ 386 (400-1¼)		NA
LNAV/VNAV DA		1068-1½ 433 (500-1½)		NA
LNAV MDA	1060-1	425 (500-1)	1060-1¼ 425 (500-1¼)	NA
CIRCLING	1120-1	485 (500-1)	1120-1½ 485 (500-1½)	NA