

WAAS CH 63021 W23A	APP CRS 229°	Rwy Idg TDZE Apt Elev	5047 775 775
--	------------------------	-----------------------------	---

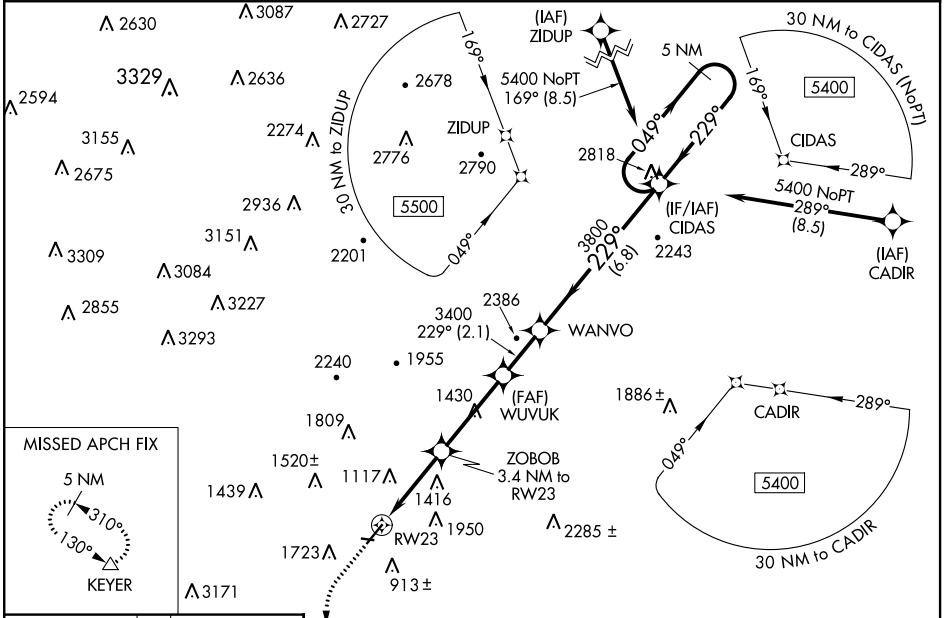
RNAV (GPS) RWY 23

GREATER CUMBERLAND RGNL (CBE)

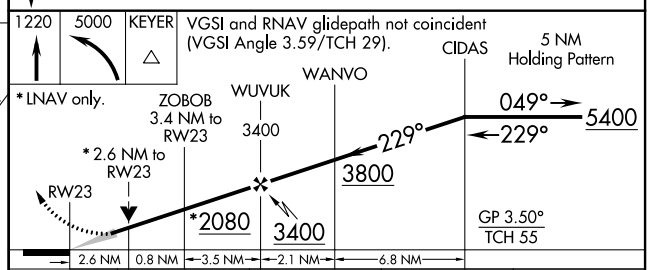
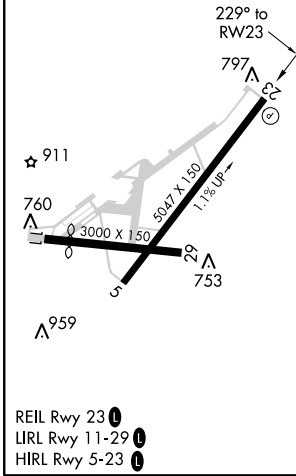
⚠ Circling NA NW of Rwy 5-23. Baro-VNAV and VDP NA when using Winchester altimeter setting. For uncompensated Baro-VNAV systems, LNAV/VNAV NA below -16°C (5°F) or above 54°C (130°F). DME/DME RNP-0.3 NA. When local altimeter setting not received, use Winchester altimeter setting and increase all DAs/MDAs 100 feet; increase all LPV visibilities ¼ SM. Rwy 5, 29 helicopter visibility reduction below 1 SM NA. Circling Rwy 5, 29 NA at night. # Missed approach requires minimum climb of 424 feet per NM to 1950.

MISSED APPROACH: Climb to 1220 then climbing left turn to 5000 direct KEYER and hold, continue climb-in-hold to 5000.

AWOS-3 128.625	JOHNSTOWN APP CON * 121.2 299.2	UNICOM 122.8 (CTAF)
--------------------------	---	-------------------------------



ELEV 775	TDZE 775
-----------------	-----------------



CATEGORY	A	B	C	D
#LPV DA	NA	NA	1088-7/8 313 (400-7/8)	NA
LPV DA	1025-3/4	250 (300-3/4)	2168-5 1393 (1400-5)	NA
LNAV/VNAV DA	1930-4 1155 (1200-4)			NA
LNAV MDA	1780-1 1/4 1005 (1100-1 1/4)	1780-1 1/2 1005 (1100-1 1/2)	1780-3 1005 (1100-3)	NA
C CIRCLING	1780-1 1/4 1005 (1100-1 1/4)	2140-1 1/2 1365 (1400-1 1/2)	2260-3 1485 (1500-3)	NA

NE-3, 23 MAY 2019 to 20 JUN 2019

NE-3, 23 MAY 2019 to 20 JUN 2019