

APP CRS	Rwy Idg	<b>2450</b>
<b>251°</b>	TDZE	<b>158</b>
	Apt Elev	<b>158</b>

# RNAV (GPS) RWY 25

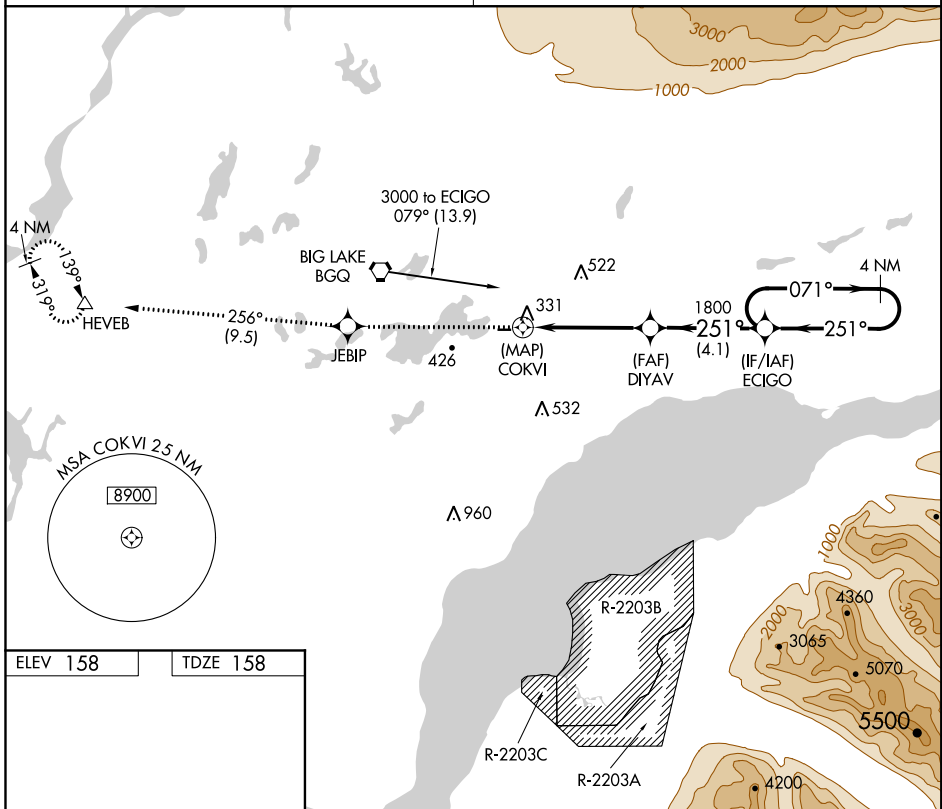
BIG LAKE (BGQ) (PAGQ)

**▽** Use Anchorage altimeter setting. Procedure NA at night.  
**△ NA** DME/DME RNP-0.3 NA. Helicopter visibility reduction below 1 SM not authorized.

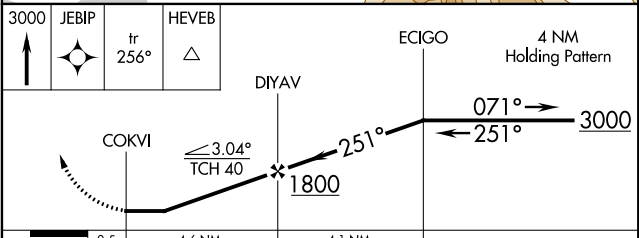
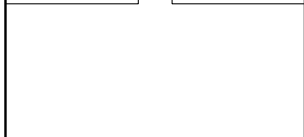
MISSED APPROACH: Climb to 3000 direct JEBIP and on track 256° to HEVEB and hold.

ANCHORAGE APP CON  
**118.6 290.5**

CTAF  
**122.8 0**



ELEV 158	TDZE 158
----------	----------



CATEGORY	A	B	C	D
LNAV MDA	1080-1¼	922 (1000-1¼)	1080-2½ 922 (1000-2½)	NA
CIRCLING	1080-1¼	922 (1000-1¼)	1080-2¾ 922 (1000-2¾)	NA

MIRL Rwy 7-25 0

BIG LAKE, ALASKA  
 Amdt 1A 29MAY14

61°32'N-149°49'W

# BIG LAKE (BGQ) (PAGQ) RNAV (GPS) RWY 25

AK, 25 APR 2019 to 20 JUN 2019

AK, 25 APR 2019 to 20 JUN 2019