

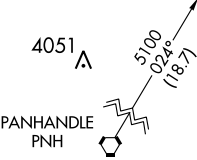
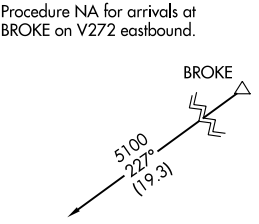
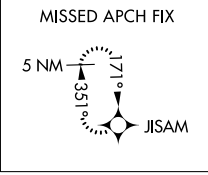
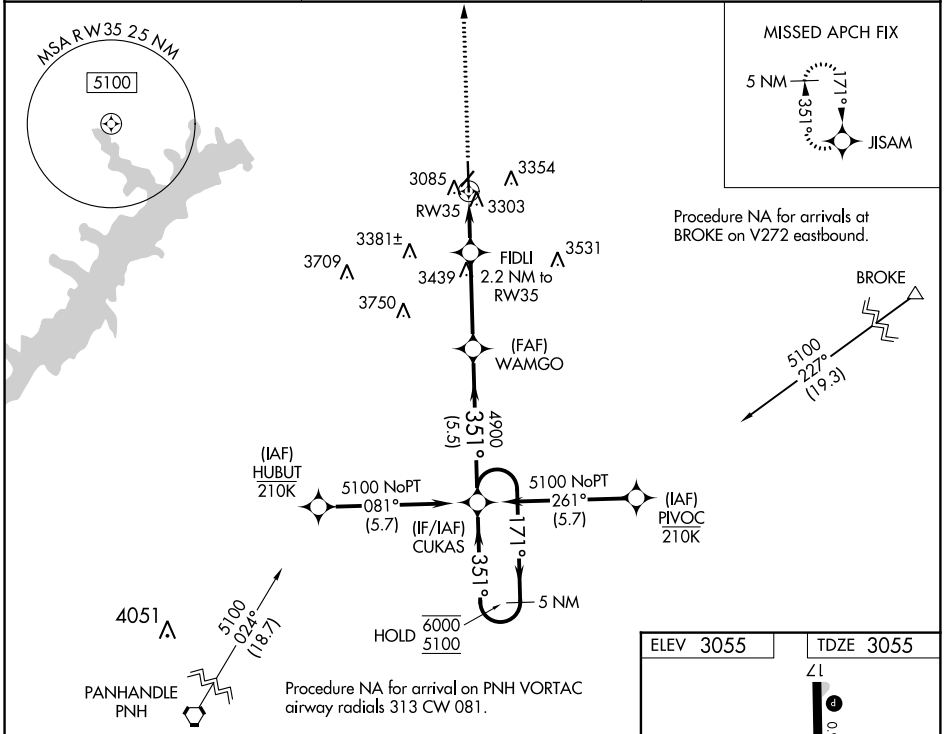
WAAS CH 53442 W35A	APP CRS 351°	Rwy Idg TDZE Apt Elev	6299 3055 3055
--	------------------------	-----------------------------	---

RNAV (GPS) RWY 35

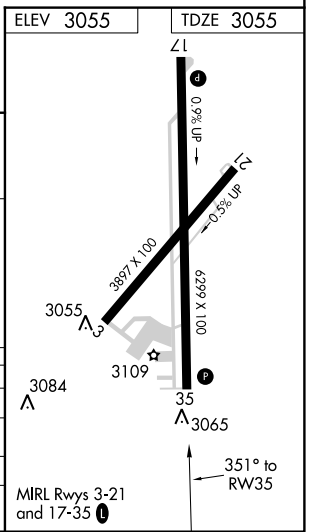
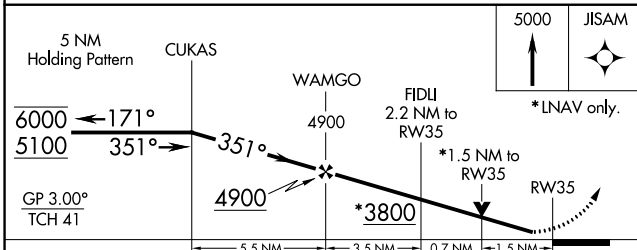
HUTCHINSON COUNTY (B.G.D)

RNP APCH.	MISSED APPROACH: Climb to 5000 direct JISAM and hold.
⚠ Rwy 35 helicopter visibility reduction below 3/4 SM NA. For uncompensated Baro-VNAV systems, LNAV/VNAV NA below -14°C or above 54°C.	

ASOS 118.325	AMARILLO APP CON ★ 119.5 307.0	UNICOM 123.0 (CTAF) 0
------------------------	--	---------------------------------



Procedure NA for arrival on PNH VORTAC airway radials 313 CW 081.



CATEGORY	A	B	C	D
LPV DA		3305-1	250 (300-1)	
LNAV/VNAV DA		3554-1 3/8	499 (500-1 3/8)	
LNAV MDA	3560-1	505 (600-1)	3560-1 3/8	505 (600-1 3/8)
CIRCLING	3620-1 565 (600-1)	3660-1 605 (700-1)	3760-2 705 (800-2)	3760-2 1/4 705 (800-2 1/4)

SC-2, 23 MAY 2019 to 20 JUN 2019

SC-2, 23 MAY 2019 to 20 JUN 2019