


WAAS CH 99499 W32A	APP CRS 324°	Rwy Idg TDZE 1153 Apt Elev 1159	5512 1153 1159
--	------------------------	---	---

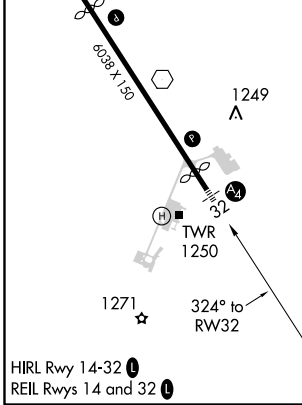
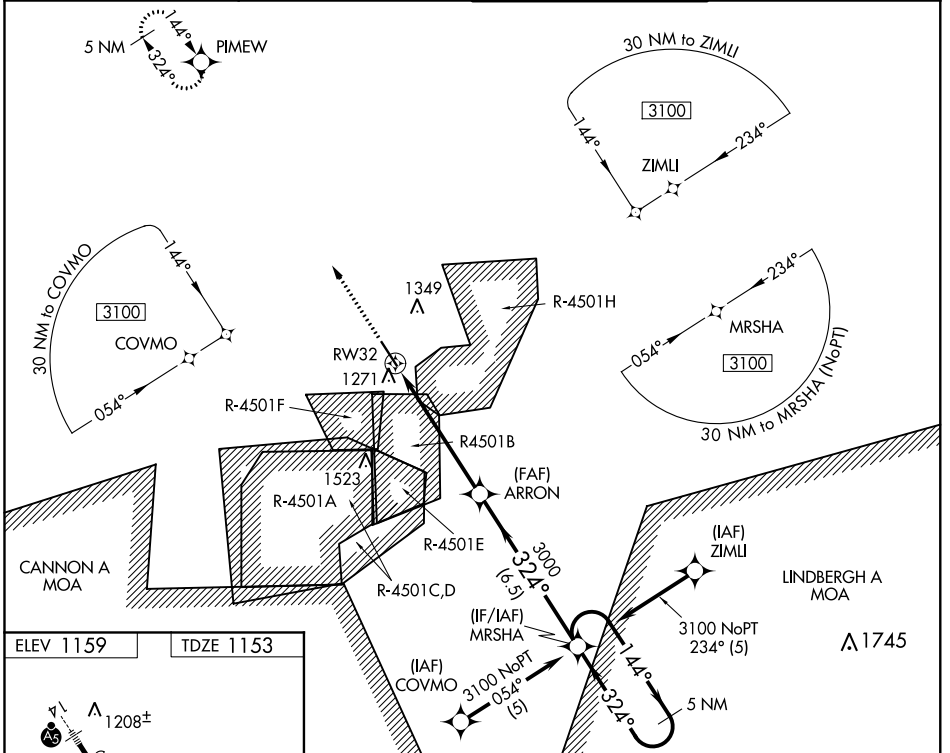
RNAV (GPS) RWY 32

WAYNESVILLE-ST ROBERT RGNL FORNEY FIELD (T'BN)

⚠ DME/DME RNP-0.3 NA. Baro-VNAV NA below -17°C (2°F).
⚠ When local altimeter setting not received, use Rolla/Vichy altimeter setting and increase all DAs/MDAs 80 feet and all visibilities ¼ mile. VDP and Baro-VNAV NA when using Rolla/Vichy altimeter setting. Inoperative table does not apply.

MALS  MISSED APPROACH: Climb to 3100 direct PIMEW and hold.

D-ATIS 118.7 229.4	KANSAS CITY CENTER 128.35 284.675	FORNEY TOWER ★ 125.4 (CTAF) 0 268.7	GND CON 123.75 256.8
------------------------------	---	---	--------------------------------



3100 PIMEW	MRSHA	5 NM Holding Pattern		
*LNAV only. *1.1 NM to RW32	ARRON	3100		
RW32	3000	GP 3.00° TCH 36		
1.1	4.5 NM	6.5 NM		
CATEGORY	A	B	C	D
LPV DA	1403/50 250 (300-1)			
LNAV/DA VNAV	1541-1½ 388 (400-1½)			
LNAV MDA	1540/50 387 (400-1)			1540/60 387 (400-1¼)
CIRCLING	1580-1½ 421 (500-1½)	1620-1½ 461 (500-1½)	1660-1½ 501 (600-1½)	1720-2 561 (600-2)

NC-3, 23 MAY 2019 to 20 JUN 2019

NC-3, 23 MAY 2019 to 20 JUN 2019