

LOC/DME I-LCH <b>109.1</b> Chan <b>28</b>	APP CRS <b>152°</b>	Rwy Idg <b>6500</b> TDZE <b>12</b> Apt Elev <b>15</b>
---	------------------------	---

# ILS or LOC RWY 15

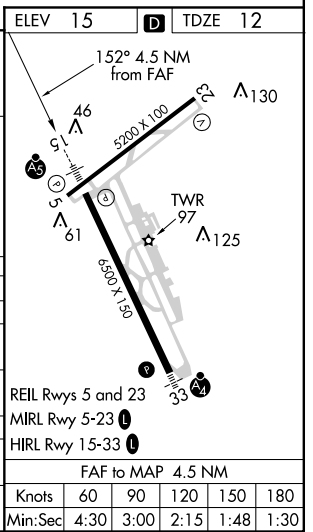
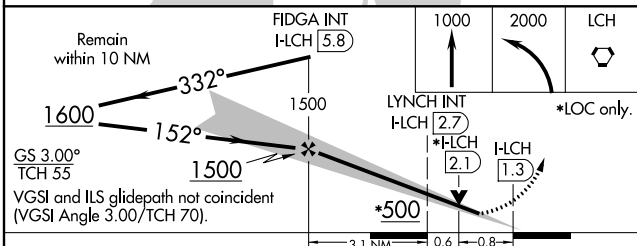
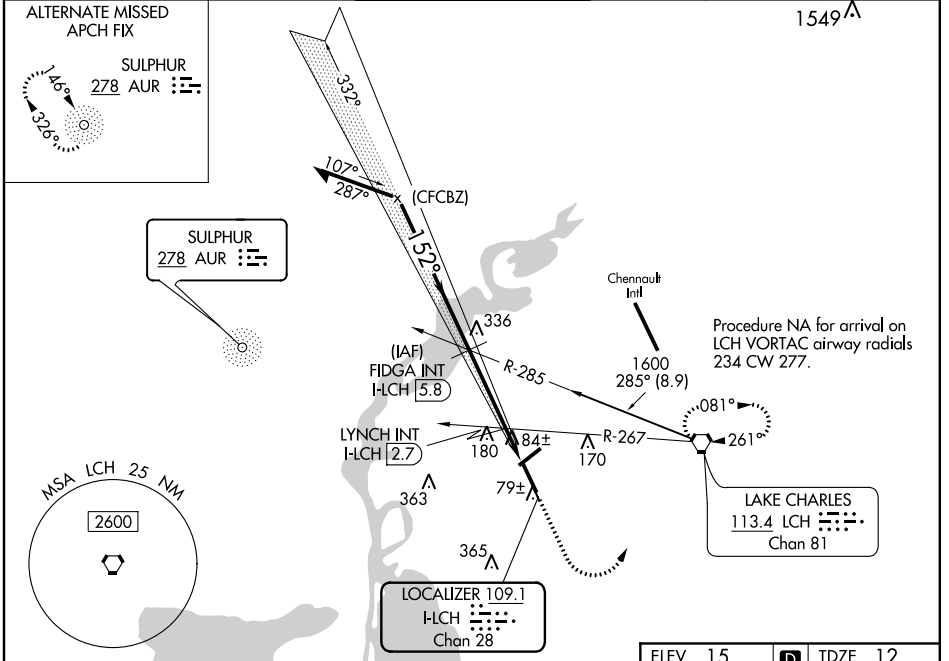
LAKE CHARLES RGNL (LCH)

**ASR** For inop ALS, increase S-LOC 15 Cats C and D visibility to 1 3/8 mile.  
**\*\* RVR 1800 authorized with use of FD or AP or HUD to DA.**

**MALSR**

**MISSED APPROACH:** Climb to 1000 then climbing left turn to 2000 direct LCH VORTAC and hold.

ATIS <b>118.75</b>	LAKE CHARLES APP CON * <b>119.35 353.75</b>	LAKE CHARLES TOWER * <b>120.7 (CTAF) 257.8</b>	GND CON <b>121.8</b>	CLNC DEL <b>126.25</b>	UNICOM <b>122.95</b>
-----------------------	--	---	-------------------------	---------------------------	-------------------------



CATEGORY	A	B	C	D
S-ILS 15 **	212/24 200 (200-1/2)			
S-LOC 15	500/24	488 (500-1/2)	500/50	488 (500-1)
CIRCLING	500-1	485 (500-1)	580-1 1/2 565 (600-1 1/2)	680-2 665 (700-2)
LYNCH FIX MINIMUMS (DUAL VOR RECEIVERS OR DME REQUIRED)				
S-LOC 15	340/24	328 (400-1/2)	340/26	328 (400-1/2)
CIRCLING	440-1 425 (500-1)	480-1 465 (500-1)	580-1 1/2 565 (600-1 1/2)	680-2 665 (700-2)

SC-4, 23 MAY 2019 to 20 JUN 2019

SC-4, 23 MAY 2019 to 20 JUN 2019