

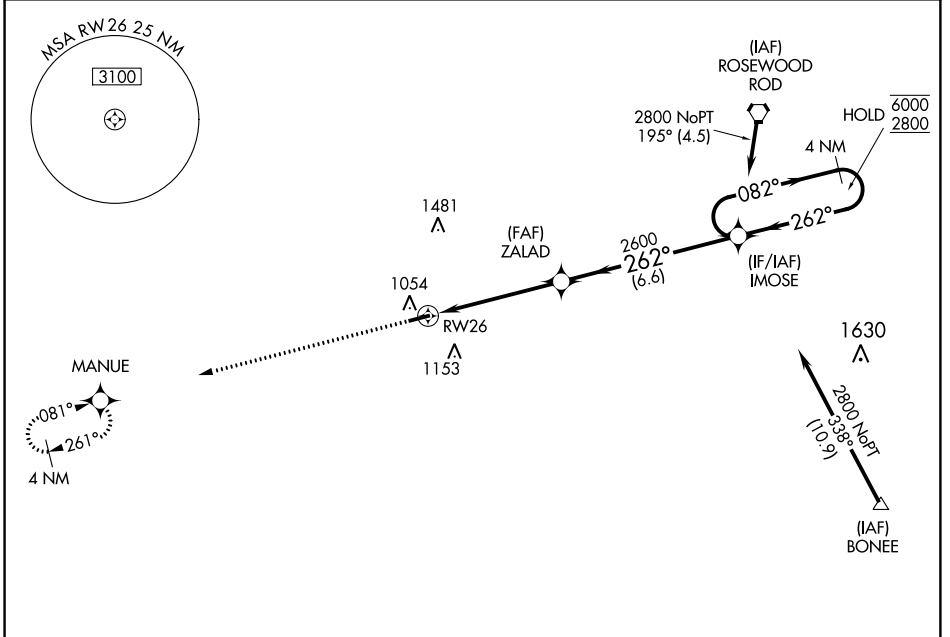
APP CRS <b>262°</b>	Rwy Idg TDZE Apt Elev	<b>3998</b> <b>986</b> <b>993</b>
------------------------	-----------------------------	---

# RNAV (GPS) RWY 26

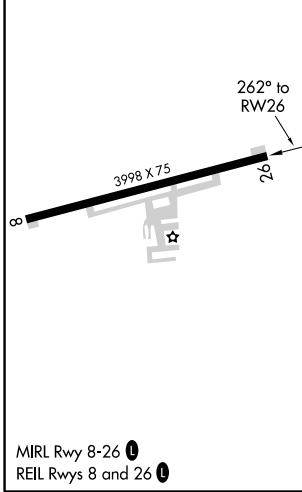
PIQUA AIRPORT-HARTZELL FIELD (I17)

RNP APCH.	MISSED APPROACH: Climb to 2700 direct MANUE and hold.
▼ Circling Rwy 8 NA at night. ▲ NA Use James M Cox Dayton Intl altimeter setting.	

JAMES M COX DAYTON INTL ATIS <b>125.8</b>	COLUMBUS APP CON <b>118.425 294.5 352.05</b>	UNICOM <b>123.0</b> (CTAF) <b>0</b>
--	---	--



ELEV 993	TDZE 986
----------	----------



	2700	MANUE				
			ZALAD	IMOSE	4 NM Holding Pattern	
			RWY 26			
					6000	2800
					082°	← 262°
CATEGORY	A	B	C	D		
LNAV MDA	1500-1	514 (600-1)	1500-1 $\frac{3}{8}$	514 (600-1 $\frac{3}{8}$ )		
<b>C</b> CIRCLING	1500-1 507 (600-1)	1560-1 567 (600-1)	1560-1 $\frac{1}{2}$ 567 (600-1 $\frac{1}{2}$ )	1880-3 887 (900-3)		

PIQUA, OHIO  
Orig-C 13SEP18

40°10'N-84°19'W

## PIQUA AIRPORT-HARTZELL FIELD (I17) RNAV (GPS) RWY 26

EC-2, 23 MAY 2019 to 20 JUN 2019

EC-2, 23 MAY 2019 to 20 JUN 2019