

APP CRS	Rwy Idg	5190
191°	TDZE	647
	Apt Elev	647

RNAV (GPS) RWY 20

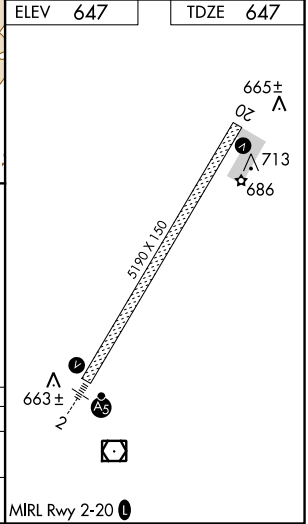
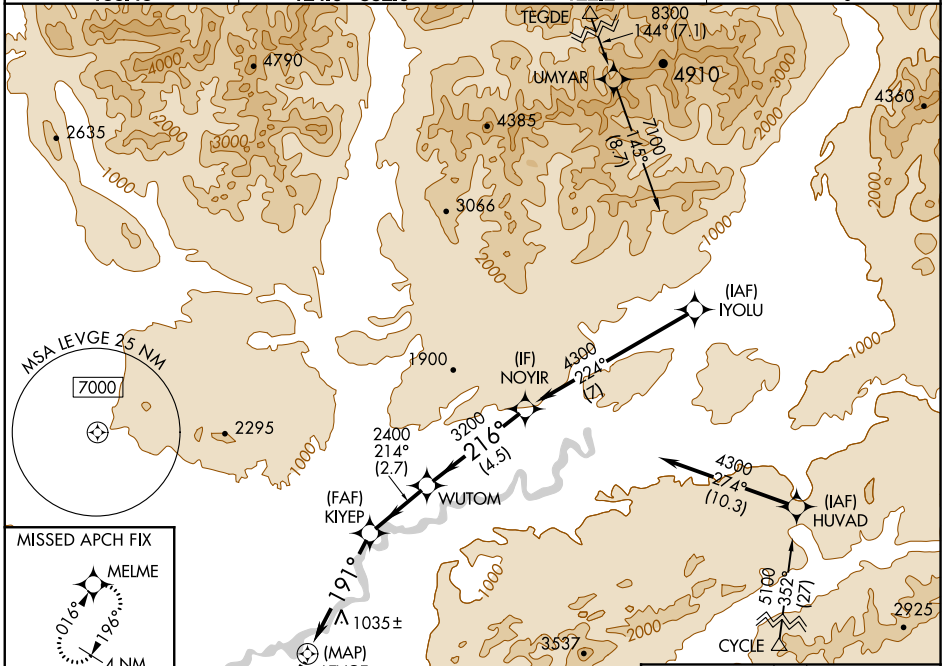
BETTLES(BTT)(PABT)

RNP APCH

Circling NA east of Rwy 2-20. Rwy 20 helicopter visibility reduction below 3/4 SM NA.
 -37°C

MISSED APPROACH: Climb to 3200 direct SIYOD and on track 197° to MELME and hold.

ASOS	ANCHORAGE CENTER	FAIRBANKS RADIO	CTAF
135.45	124.6 352.0	122.2	122.9



3200	SIYOD	tr 197°	MELME	NOYIR
			KIYEP	WUTOM
			2400	4300
			3200	
			1.4 NM to LEVGE	
			3.00°	
			TCH 52	
			0.4	
			1.4 NM	
			3.5 NM	
			2.7 NM	
			4.5 NM	

CATEGORY	A	B	C	D
LNVA MDA	1300-1 653 (700-1)		1300-1 7/8 653 (700-1 7/8)	
CIRCLING	1300-1 653 (700-1)		1320-2 673 (700-2)	1320-2 1/4 673 (700-2 1/4)

MRL Rwy 2-20

AK, 25 APR 2019 to 20 JUN 2019

AK, 25 APR 2019 to 20 JUN 2019