

BEAUFORT, SOUTH CAROLINA

# RNAV (GPS) RWY 5

WAAS Chan <b>90095</b> <b>W05A</b>	APCH CRS <b>047°</b>	Rwy Idg <b>12,202</b> TDZE <b>37</b> Arprt Elev <b>37</b>
---------------------------------------	----------------------	---

AL-916 [USN]

BEAUFORT MCAS (MERRITT FLD) (KNBC)

\* When ALS inop, increase CAT ABC vis to 1/2 mile, CAT D vis to 1 mile.  
 \*\* When ALS inop, increase CAT AB vis to 1 mile, CAT CD to 1 1/2 miles.



MISSED APPROACH: Climb to 3000 direct DUSBE, track 047° to HOWEL and hold. Continue climb in hold to 3000.

BEAUFORT APP CON		BEAUFORT TOWER * <b>119.05 342.875</b>	GND CON <b>128.15 348.625</b>	CLNC DEL <b>128.15 348.625</b>	ASR/ PAR
ATIS * <b>279.525</b>	(ABV 3000) <b>125.125 292.125</b> (3000 and BLW) <b>123.7 269.125</b>				

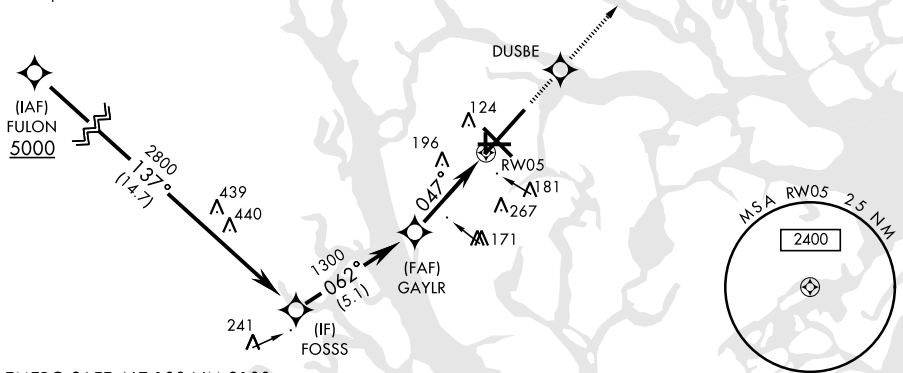
## RADAR REQUIRED

Initial approach segment 230 KIAS Max.  
 Intmed approach segment 210 KIAS Max.

DME/DME RNP-0.3 NA

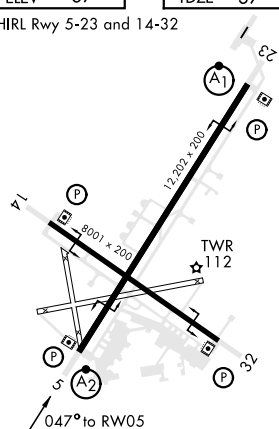
For uncompensated Baro-VNAV systems,  
 LNAV/VNAV NA below -15°C(5°F) or  
 above 54°C(130°F).

CAUTION: Group 3 WCH is 18 ft;  
 Group 4 is 13 ft.



EMERG SAFE ALT 100 NM 3100

FULON		↑ LNAV Only		3000	DUSBE	trk 047°	HOWEL	ELEV 37	TDZE 37
5000		FOSSS						HIRL Rwy 5-23 and 14-32	
137°		062°		1300		↑ 1.1 NM to RW05			
				3.8 NM					
GP 3.01°	TCH 38								
CATEGORY	A	B	C	D					
LPV DA	237-3/4		200	(200-3/4)					
LNAV / * VNAV DA	290-3/4	301-3/4	309-3/4	320-3/4					
	253 (300-3/4)	264 (300-3/4)	272 (300-3/4)	283 (300-3/4)					
LNAV MDA **	420-3/4	383	(400-3/4)	420-7/8	383	(400-7/8)			
CIRCLING	500-1	463	(500-1)	600-1 1/2	600-2	563 (600-1 1/2) 563 (600-2)			



SE-2, 23 MAY 2019 to 20 JUN 2019

SE-2, 23 MAY 2019 to 20 JUN 2019

BEAUFORT, SOUTH CAROLINA

32°29'N-80°43'W

BEAUFORT MCAS (MERRITT FLD) (KNBC)

Amrd 2 01FEB18

# RNAV (GPS) RWY 5