

LOC/DME I-HCV 110.3 Chan 40	APP CRS 052°	Rwy Idg TDZE Apt Elev	5726 947 947
---	------------------------	-----------------------------	---

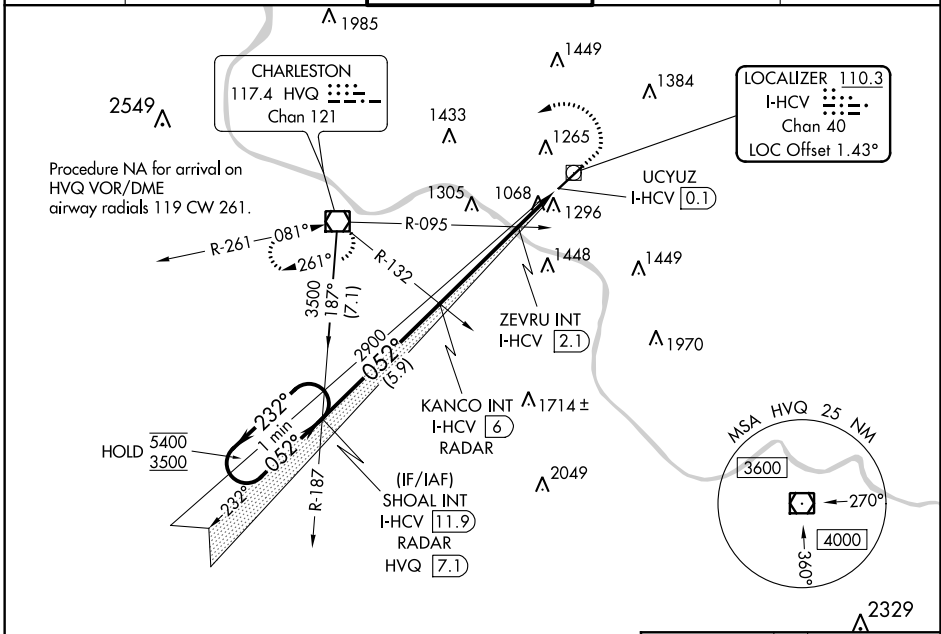
ILS or LOC RWY 5

YEAGER (CRW)

DME required.

MISSED APPROACH: Climb to 1800 then climbing left turn to 3500 direct HVQ VOR/DME and hold.

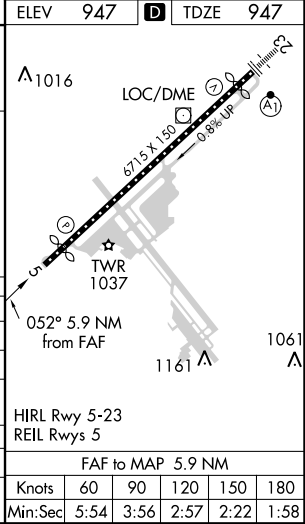
ATIS 127.6	CHARLESTON APP CON 124.1 269.125	CHARLESTON TOWER 125.7 257.8	GND CON 121.8 348.6	CLNC DEL 118.55
----------------------	--	--	-------------------------------	---------------------------



NE-4, 23 MAY 2019 to 20 JUN 2019

NE-4, 23 MAY 2019 to 20 JUN 2019

ELEV 947		D TDZE 947	
One Minute Holding Pattern		*LOC only	
SHOAL INT I-HCV 11.9 RADAR		1800 3500 HVQ	
KANCO INT I-HCV 6 RADAR		ZEVRU INT I-HCV 2.1	
UCYUZ I-HCV 0.1		I-HCV DME ANTENNA	
*1640		*I-HCV 1.1	
5400 ← 232°		← 052° →	
3500		2900	
GS 3.00° TCH 56		*1640	
← 5.9 NM		← 3.9 NM	
CATEGORY	A	B	C
S-ILS 5		1197/40	250 (300-¾)
S-LOC 5	1640/55	693 (700-1)	1640-2 693 (700-2)
CIRCLING	1640-1	693 (700-1)	1760-2½ 813 (900-2½) 1880-3 933 (1000-3)
ZEVRU FIX MINIMUMS (DUAL VOR RECEIVERS OR DME REQUIRED)			
S-LOC 5	1320/55	373 (400-1)	
CIRCLING	1600-1	653 (700-1)	1760-2½ 813 (900-2½) 1880-3 933 (1000-3)



FAF to MAP 5.9 NM					
Knots	60	90	120	150	180
Min:Sec	5:54	3:56	2:57	2:22	1:58