

LOM CI <b>400</b>	APP CRS <b>337°</b>	Rwy Idg <b>7203</b> TDZE <b>796</b> Apt Elev <b>799</b>
----------------------	------------------------	---

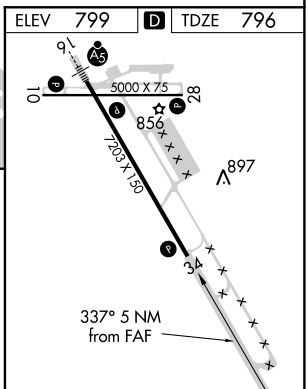
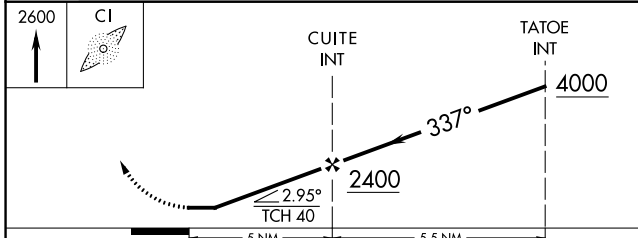
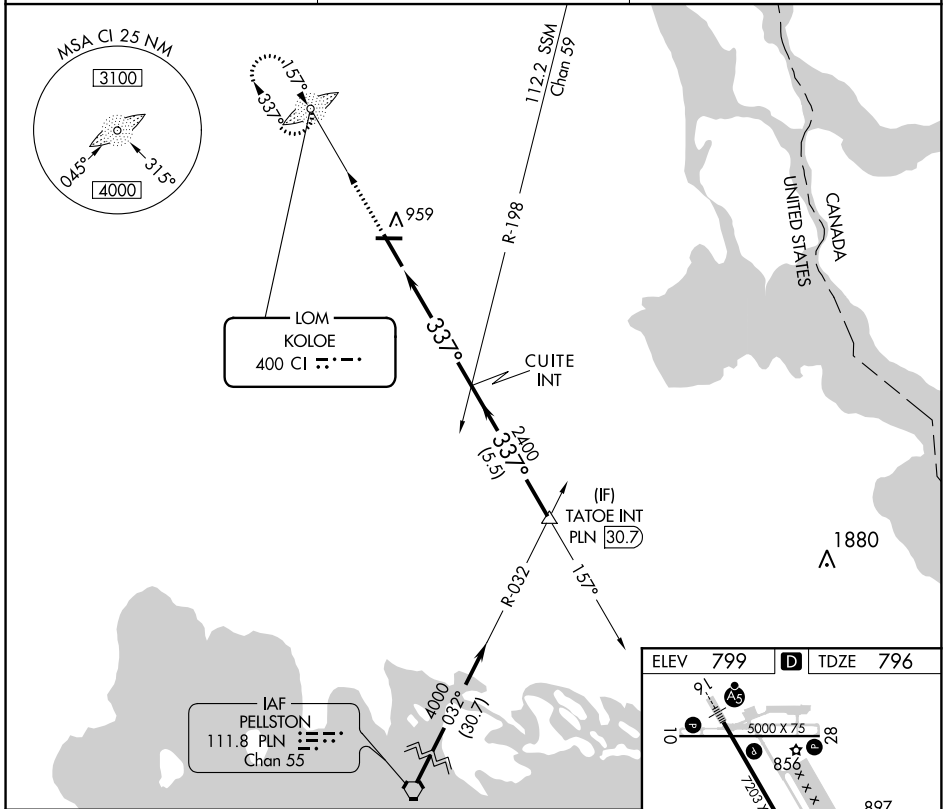
# NDB RWY 34

CHIPPEWA COUNTY INTL (CIU)

**⚠** When local altimeter setting not received, use Sault-Ste Marie Muni/Sanderson Field altimeter setting and increase all MDA 60 feet and increase S-34 Cat C/D visibility to 1 3/8 .

**⚠ NA** MISSED APPROACH: Climb to 2600 direct KOLOE LOM and hold.

AWOS-3PT <b>127.575</b>	TORONTO CENTER <b>132.65 344.5</b>	UNICOM <b>123.0 (CTAF)</b> <b>📻</b>
----------------------------	---------------------------------------	--



CATEGORY	A	B	C	D
S-34	1220-1 424 (500-1)		1220-1 1/4 424 (500-1 1/4)	
CIRCLING	1260-1 461 (500-1)		1260-1 1/2 461 (500-1 1/2)	1360-2 561 (600-2)

REIL Rwy 10, 28 and 34 **📻**  
MIRL Rwy 10-28 **📻**  
HIRL Rwy 16-34 **📻**

FAF to MAP 5 NM

Knots	60	90	120	150	180
Min:Sec	5:00	3:20	2:30	2:00	1:40

EC-1, 23 MAY 2019 to 20 JUN 2019

EC-1, 23 MAY 2019 to 20 JUN 2019