

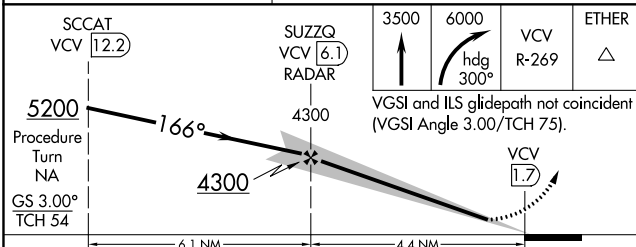
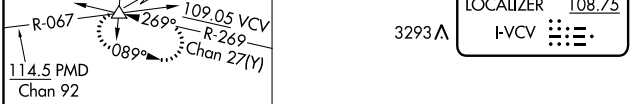
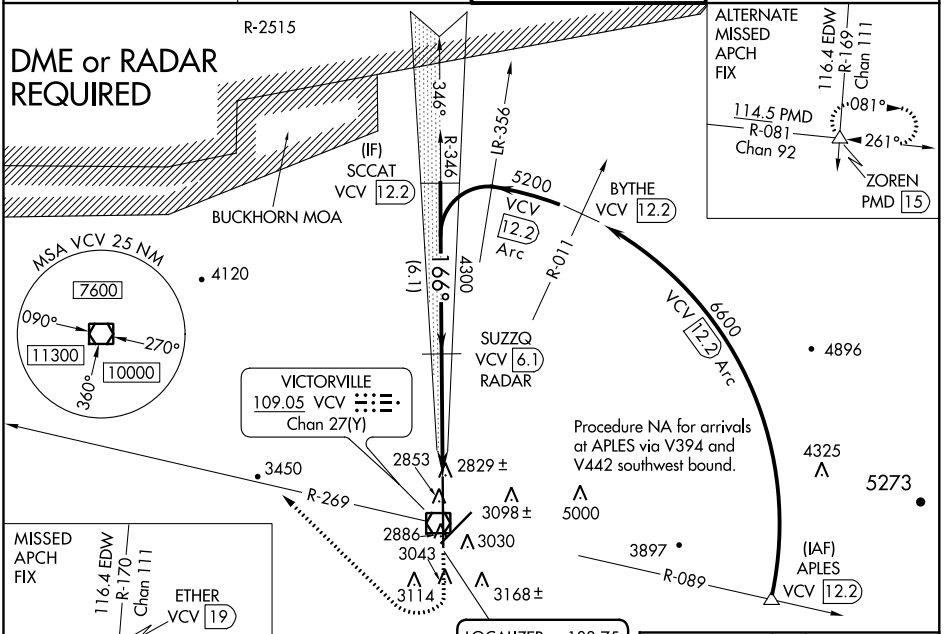
LOC I-VCV <b>108.75</b>	APP CRS <b>166°</b>	Rwy Idg TDZE Apt Elev	<b>15050</b> <b>2825</b> <b>2885</b>
----------------------------	------------------------	-----------------------------	--

**ILS or LOC RWY 17**  
SOUTHERN CALIFORNIA LOGISTICS (VCV)

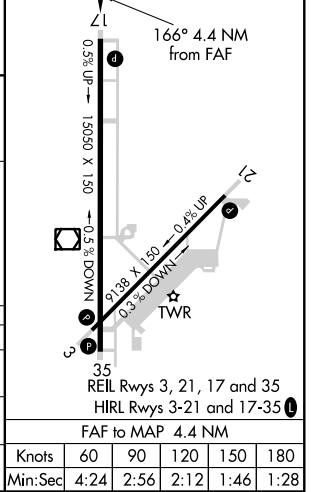
**⚠** When local altimeter setting not received, use Edwards AFB altimeter setting and increase all DA and MDA 160 feet. Increase all visibilities 1/2 mile.  
**⚠** DME from VCV VOR/DME. Simultaneous reception of I-VCV and VCV DME required.

MISSED APPROACH: Climb to 3500, then climbing right turn to 6000 via heading 300° and VCV VOR/DME R-269 to ETHER INT and hold.

ATIS ★ <b>135.475</b>	JOSHUA APP CON <b>124.55 363.0</b>	VICTORVILLE TOWER ★ <b>118.35(CTAF) 282.225</b>	GND CON <b>124.45</b>
--------------------------	---------------------------------------	--	--------------------------



ELEV	2885	TDZE	2825
------	------	------	------



CATEGORY	A	B	C	D
S-ILS 17		3025/40	200 (200-34)	
S-LOC 17		3080/50	255 (200-1)	
CIRCLING	3360-1 475 (500-1)	3420-1 535 (600-1)	3420-1½ 535 (600-1½)	3580-2¼ 695 (700-2¼)

SW-3, 23 MAY 2019 to 20 JUN 2019

SW-3, 23 MAY 2019 to 20 JUN 2019