

VOR/DME PWA <b>113.4</b> Chan <b>81</b>	APP CRS <b>176°</b>	Rwy Idg TDZE Apt Elev	<b>6844</b> <b>1291</b> <b>1300</b>
---	------------------------	-----------------------------	---

# VOR RWY 17L

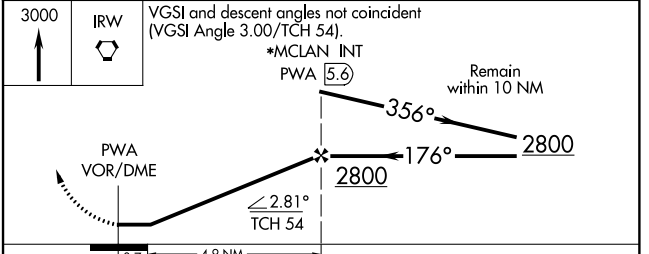
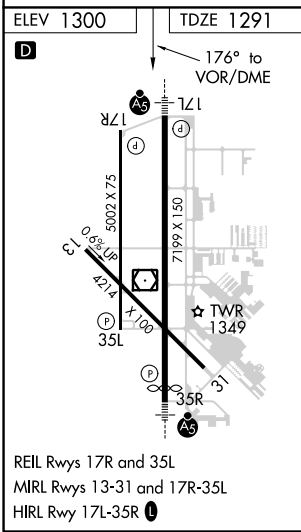
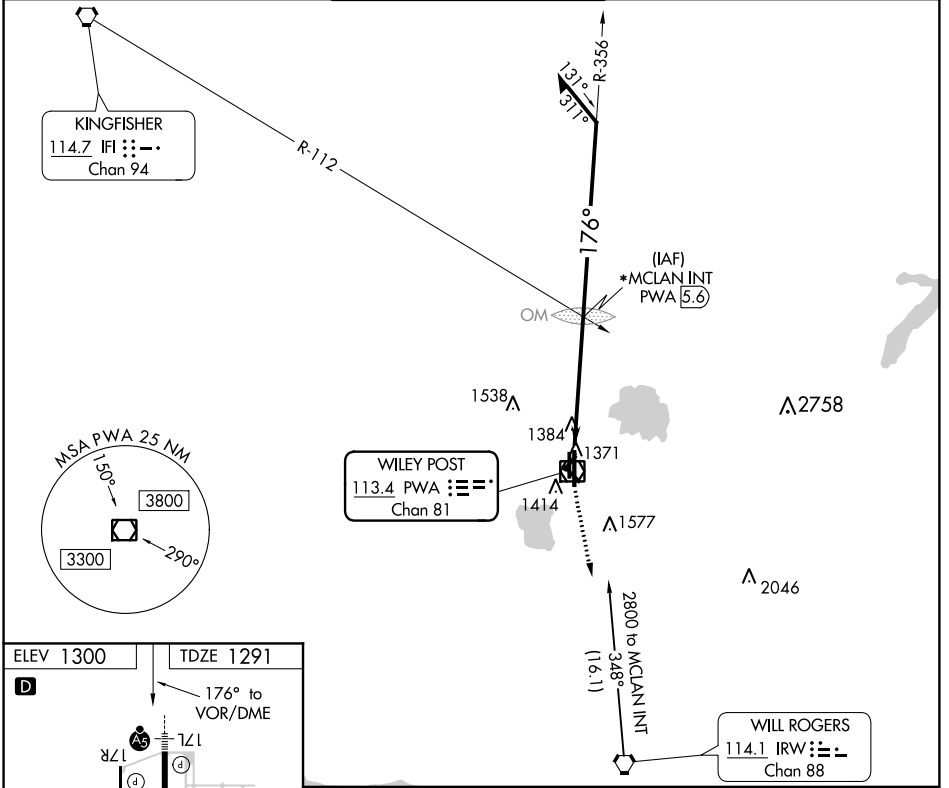
WILEY POST (PWA)

**ASR** For inop MALSR increase S-17L Cat D visibility ¼ mile.  
\*RADAR fix in lieu of MCLAN INT will be provided on pilot request.

**MALSR**

**MISSED APPROACH:** Climb to 3000 direct IRW VORTAC.

ATIS <b>128.725</b>	OKE CITY APP CON <b>124.6 266.8</b>	WILEY POST TOWER * <b>126.9</b> (CTAF) <b>306.9</b>	GND CON <b>121.7</b>	UNICOM <b>122.95</b>
------------------------	--	--	-------------------------	-------------------------



CATEGORY	A	B	C	D
S-17L	1640-½	349 (400-½)		1640-1 349 (400-1)
<b>C</b> CIRCLING	1780-1	480 (500-1)	1880-1½ 580 (600-1½)	1880-2 580 (600-2)

SC-1, 23 MAY 2019 to 20 JUN 2019

SC-1, 23 MAY 2019 to 20 JUN 2019