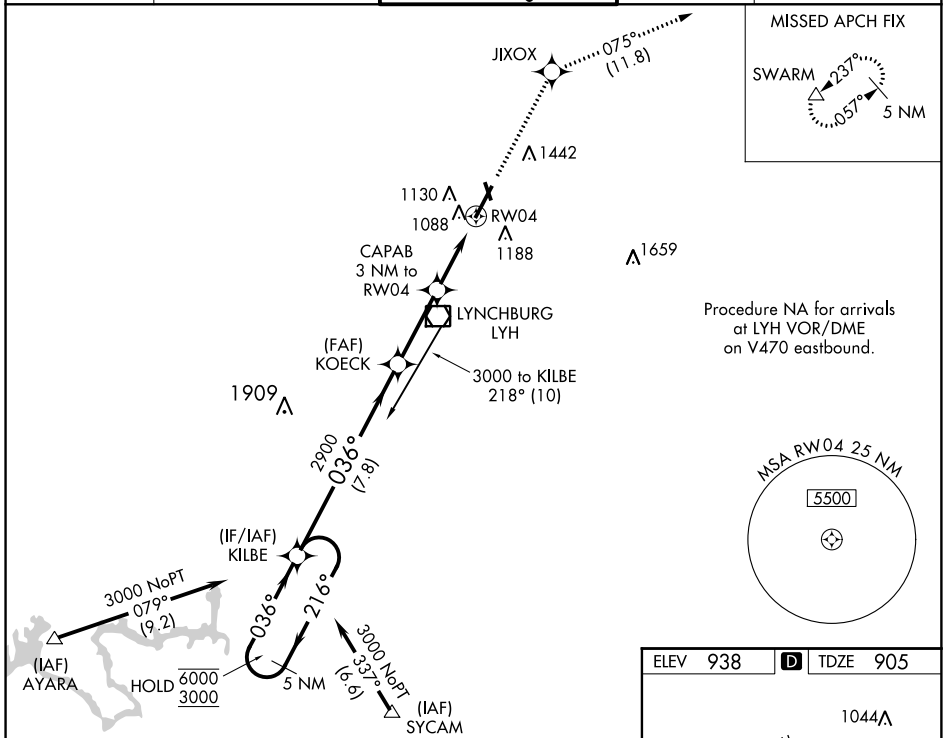


WAAS CH 58205 W04A	APP CRS 036°	Rwy Idg TDZE Apt Elev	6800 905 938
----------------------------------------	------------------------	-----------------------------	-----------------------------------------

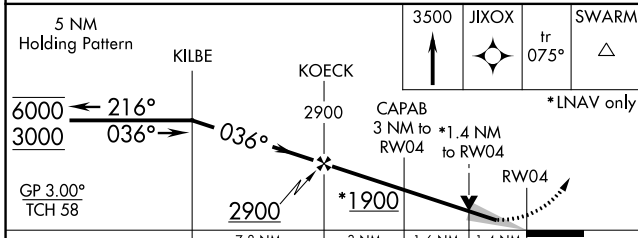
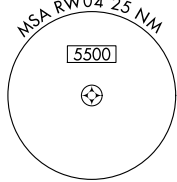
RNAV (GPS) RWY 4

LYNCHBURG RGNL/PRESTON GLENN FIELD (LYH)

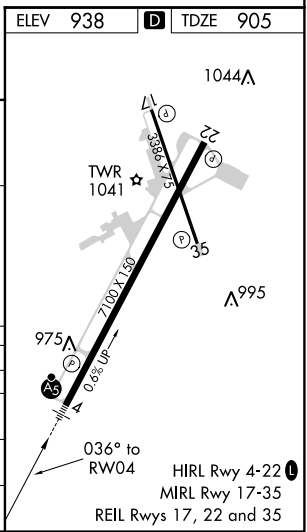
RNP APCH.		MALSRL	MISSED APPROACH: Climb to 3500 direct JIXOX and track 075° to SWARM and hold.	
<p>⚠ For uncompensated Baro-VNAV systems, LNAV/VNAV NA below -16°C or above 47°C. For inop ALS, increase LNAV Cat A and B visibility to RVR 5000.</p> <p>⚠ Circling Rwy 17 NA at night.</p>				
ATIS 119.8	ROANOKE APP CON 135.0 254.325	LYNCHBURG TOWER ★ 127.65 (CTAF) 0 257.8	GND CON 121.9	UNICOM 122.95



Procedure NA for arrivals at LYH VOR/DME on V470 eastbound.



CATEGORY		A	B	C	D
LPV	DA		1175/40	270 (300-¾)	
LNAV/VNAV	DA		1394/60	489 (500-1¼)	
LNAV	MDA	1400/40	495 (500-¾)	1400/50	495 (500-1)
CIRCLING		1660-1	1780-1¼	1800-2½	1800-2¾
		722 (800-1)	842 (900-1¼)	862 (900-2½)	862 (900-2¾)



RNAV (GPS) RWY 4

NE-3, 23 MAY 2019 to 20 JUN 2019

NE-3, 23 MAY 2019 to 20 JUN 2019