

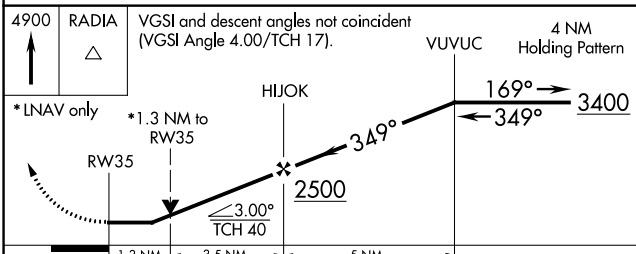
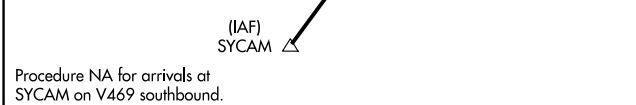
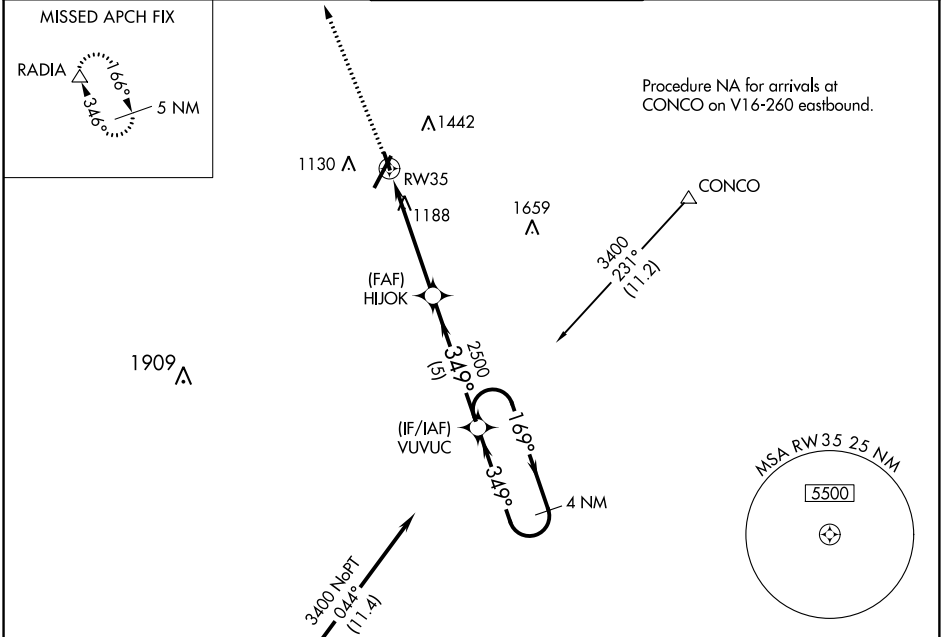
WAAS CH 93634 W35A	APP CRS 349°	Rwy Idg 3386 TDZE 933 Apt Elev 938
--	------------------------	---

RNAV (GPS) RWY 35

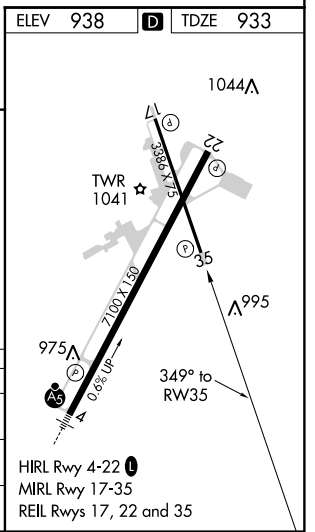
LYNCHBURG RGNL/PRESTON GLENN FIELD (LYH)

RNP APCH.	<p>▼ Circling Rwy 17 NA at night. ▲ Rwy 35 helicopter visibility reduction below ¾ SM NA.</p>	MISSED APPROACH: Climb to 4900 direct RADIA and hold.
-----------	---	---

ATIS 119.8	ROANOKE APP CON 135.0 254.325	LYNCHBURG TOWER * 127.65 (CTAF) 257.8	GND CON 121.9	UNICOM 122.95
----------------------	---	---	-------------------------	-------------------------



4900	RADIA	VGS1 and descent angles not coincident (VGS1 Angle 4.00/TCH 17).		4 NM Holding Pattern
*LNAV only		1.3 NM	3.5 NM	5 NM
CATEGORY	A	B	C	D
LP MDA	1480-1	547 (600-1)		NA
LNAV MDA	1500-1	567 (600-1)		NA
CIRCLING	1660-1 722 (800-1)	1780-1 ¼ 842 (900-1 ¼)		NA



HIRL Rwy 4-22
MIRL Rwy 17-35
REIL Rwy 17, 22 and 35

NE-3, 23 MAY 2019 to 20 JUN 2019

NE-3, 23 MAY 2019 to 20 JUN 2019