

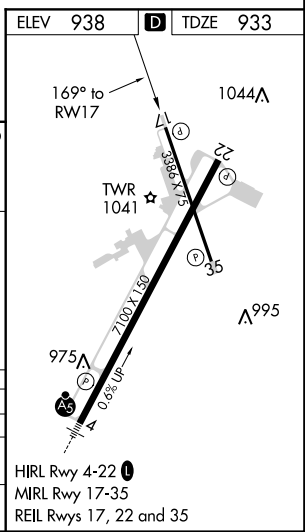
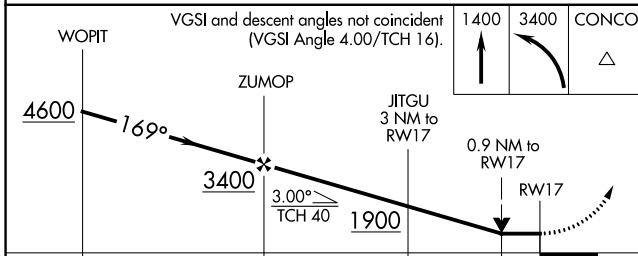
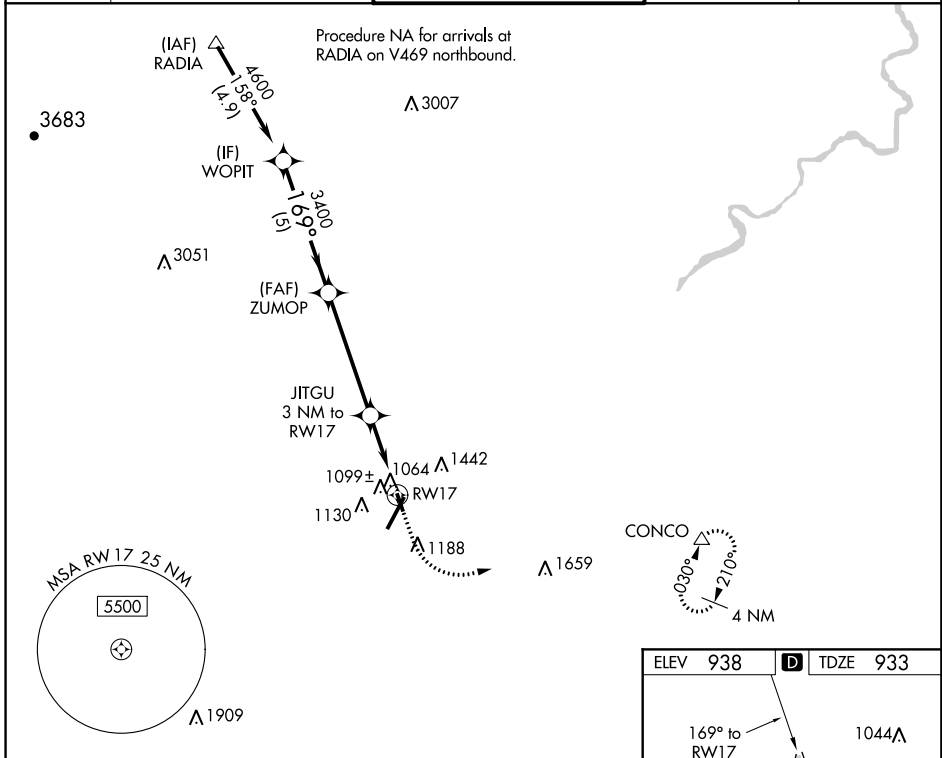
WAAS CH 48934 W17A	APP CRS 169°	Rwy Idg TDZE Apt Elev	3386 933 938
----------------------------------------	------------------------	-----------------------------	-----------------------------------------

RNAV (GPS) RWY 17

LYNCHBURG RGNL/PRESTON GLENN FIELD (LYH)

RNP APCH.	MISSED APPROACH: Climb to 1400 then climbing left turn to 3400 direct CONCO and hold.
<p>Procedure NA at night. Rwy 17 helicopter visibility reduction below 1 SM NA.</p>	

ATIS 119.8	ROANOKE APP CON 135.0 254.325	LYNCHBURG TOWER * 127.65 (CTAF) 257.8	GND CON 121.9	UNICOM 122.95
----------------------	-----------------------------------------	-------------------------------------------------	-------------------------	-------------------------



CATEGORY	A	B	C	D
LP MDA	1320-1	387 (400-1)		NA
LNVA MDA	1360-1	427 (500-1)		NA
C CIRCLING	1660-1 722 (800-1)	1780-1¼ 842 (900-1¼)		NA

RNAV (GPS) RWY 17

NE-3, 23 MAY 2019 to 20 JUN 2019

NE-3, 23 MAY 2019 to 20 JUN 2019