

ILS or LOC RWY 4


LYNCHBURG RGNL/PRESTON GLENN FIELD (LYH)

LOC I-LYH 110.1	APP CRS 036°	Rwy Idg 6800	TDZE 905
		Apt Elev 938	

ADF required for LOC only. DME required.

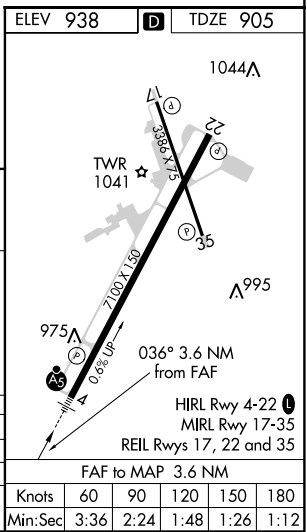
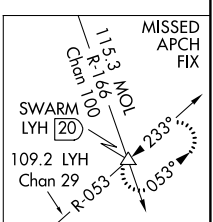
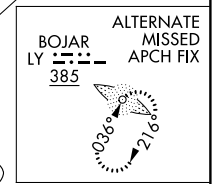
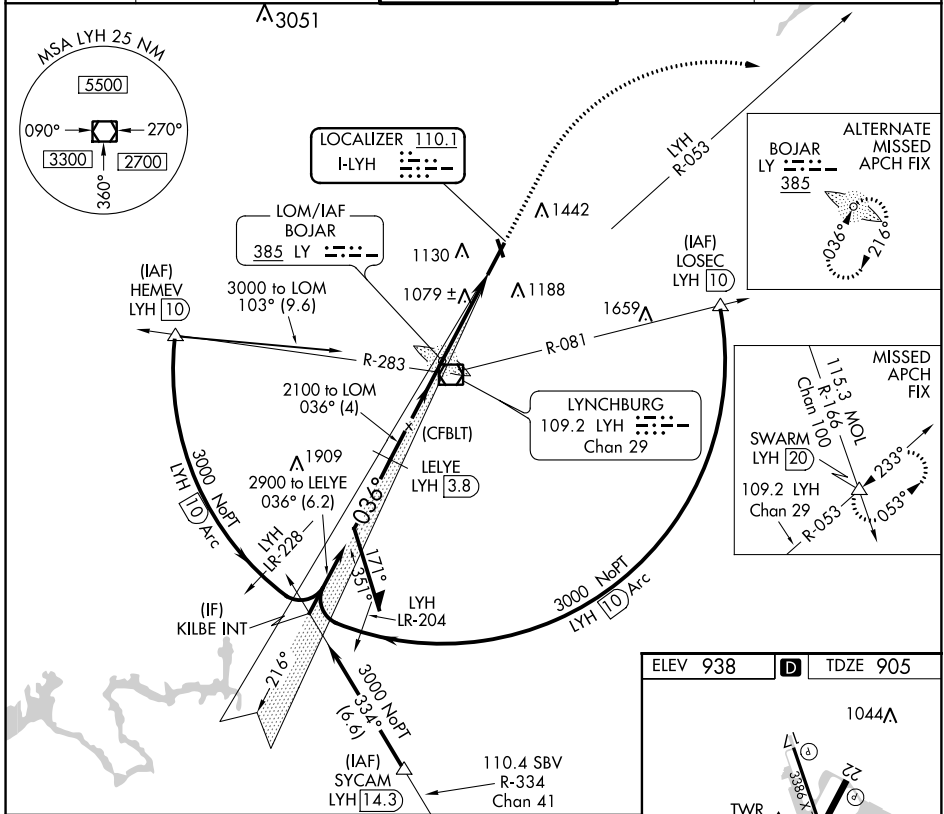
⚠ Circling Rwy 17 NA at night. DME from LYH VOR/DME. Simultaneous reception of I-LYH and LYH DME required.

⚠ ** RVR 1800 authorized with use of FD or AP or HUD to DA.

MALS R 

MISSED APPROACH: Climb to 1800 then climbing right turn to 3500 on heading 080° and on LYH VOR/DME R-053 to SWARM INT/LYH 20 DME and hold.

ATIS 119.8	ROANOKE APP CON 135.0 254.325	LYNCHBURG TOWER ★ 127.65 (CTAF) 257.8	GND CON 121.9	UNICOM 122.95
----------------------	---	---	-------------------------	-------------------------



Remain within 10 NM	LY LOM	1800	3500	SWARM		
		↑	hdg 080°	LYH R-053		
3000	LELYE LYH 3.8 (CFBLT)	2900	2092	*LOC only.		
GS 3.00° TCH 55	*2900	*2100				
	1.4 NM	2.6 NM	3.6 NM			
CATEGORY	A	B	C	D		
S-ILS 4 **	1105/24 200 (200-½)					
S-LOC 4	1320/24	415 (400-½)	1320/40	415 (400-¾)		
CIRCLING	1660-1	1780-1¼	1800-2½	1800-2¾		
	722 (800-1)	842 (900-1¼)	862 (900-2½)	862 (900-2¾)		
	Knots	60	90	120	150	180
	Min:Sec	3:36	2:24	1:48	1:26	1:12

ILS or LOC RWY 4

NE-3, 23 MAY 2019 to 20 JUN 2019

NE-3, 23 MAY 2019 to 20 JUN 2019