

WENDOVER, UTAH

AL-445 (FAA)

19115

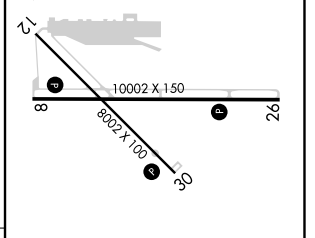
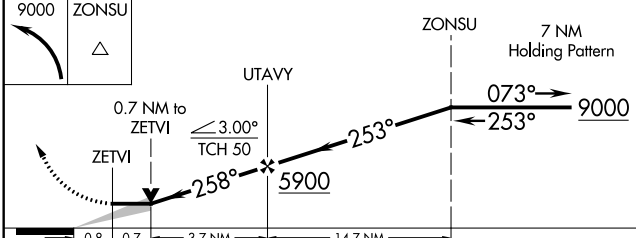
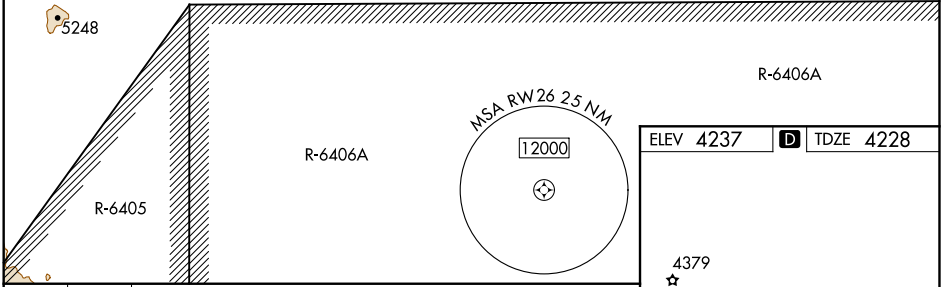
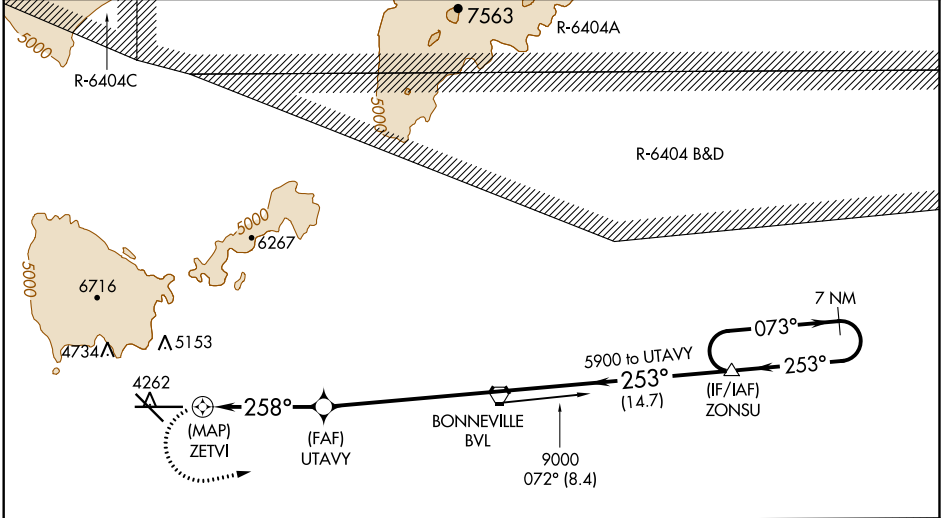
APP CRS	Rwy ldg	<b>10002</b>
<b>258°</b>	TDZE	<b>4228</b>
	Apt Elev	<b>4237</b>

# RNAV (GPS) RWY 26

WENDOVER (ENV)

NA -12°C	Circling NA north of Rwy 8-26. DME/DME RNP-0.3 NA.	MISSED APPROACH: Climbing left turn to 9000 direct ZONSU and hold, continue climb-in-hold to 9000.
-------------	---	--

AWOS-3PT <b>120.55</b>	SALT LAKE CENTER <b>128.55 269.175</b>	CEDAR CITY RADIO <b>122.1R</b>	UNICOM <b>122.8 (CTAF)</b>
---------------------------	---	-----------------------------------	-------------------------------



CATEGORY	A	B	C	D	E
LNVA MDA	4740-1	512 (600-1)	4740-1 <sup>3</sup> / <sub>8</sub>	512 (600-1 <sup>3</sup> / <sub>8</sub> )	
CIRCLING	4740-1	503 (600-1)	4860-1 <sup>1</sup> / <sub>2</sub> 623 (700-1 <sup>1</sup> / <sub>2</sub> )	5080-2 <sup>3</sup> / <sub>4</sub> 843 (900-2 <sup>3</sup> / <sub>4</sub> )	5700-3 1463 (1500-3)

ELEV 4237	TDZE 4228
REIL Rwy 8, 12, 26 and 30 MIRL Rwy 8-26 and 12-30	

SW-4, 23 MAY 2019 to 20 JUN 2019

SW-4, 23 MAY 2019 to 20 JUN 2019

WENDOVER, UTAH  
Amdt 1 13NOV14

40°43'N-114°02'W

# WENDOVER (ENV)

## RNAV (GPS) RWY 26